

ExoTec® facade panel and fixing system

What is it?

A fully sealed, compressed facade panel installed with a proprietary fixing system. Features expressed joints and is either site-painted or pre-finished offsite. ExoTec facade panel is the most popular fibre-cement commercial facade system.

Where do you use it?

As an external facade, fascia or soffit on commercial buildings requiring a durable, low-maintenance and impact-resistant system, and an expressed jointed panel look. It's suitable for either full wrap panel or composite designs.

What are the key benefits?

Design flexibility.

A variety of panel patterns can be achieved, including vertical, horizontal and staggered – fixed with a choice of either countersunk concealed fasteners or exposed screw heads.

To add to this, a wide range of decorative paint finishes can be used, including site-applied acrylic textures and factory-applied polyurethane plain and metallic colours.

Easy specification.

The designer and installer do not need to make allowances for panel expansion or contraction resulting from weather change, because the compressed panel is sealed on all sides, making it very stable, and the design of the proprietary fixing system helps to absorb any building movement.

Durability.

The compressed panel structure delivers high levels of impact resistance, making it a smart choice for commercial areas that are prone to wear and tear.

Fast Installation.

The reliable proprietary fixing system makes commercial installations fast, easy and cost-effective.

Moisture resistance.

The compressed panels are sealed on all six sides to improve moisture resistance. Added to this, the proprietary ExoTec® Gasket Snap Strip provides an initial weather seal which further improves moisture management and building soundness.

Security.

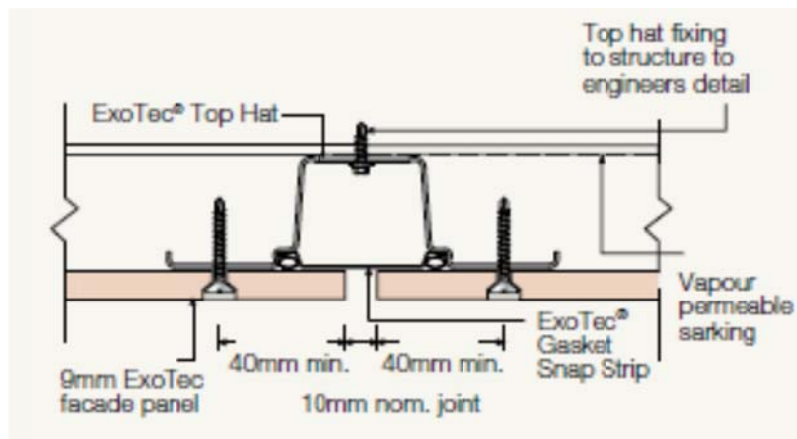
ExoTec facade panel and fixing system is resistant to damage from termites, rot and fire.*

A 10-year product warranty gives peace of mind

Available sizes

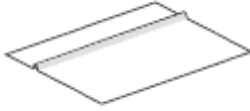
Length (mm)	Width (mm)	Thickness (mm)	Mass (kg/m ²)
1800	900	9	13.95
2400			
3000			
1800			
2100			
2400	1200	9	13.95
2700			
3000			
2400	1200	12	18.6
3000			

Top hat and panel fixing detail



Accessories

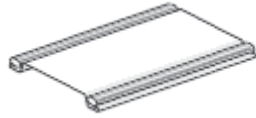
JH Backing Strip



A weather seal at horizontal panel joints for use with ExoTec® façade panel and fixing system and Scyon™ Matrix™ cladding.

Length: 1190mm, 2390mm and 2990mm

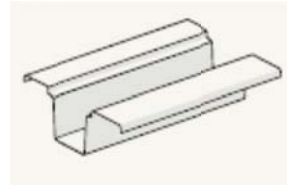
ExoTec® Gasket Snap Strip



For use with the ExoTec® façade panel and fixing system, this gasket snap strip is specially designed to clip into the ExoTec® Top Hat at vertical facade panel joints to cover fixings to the structure and to provide an initial weather seal and drainage using a neoprene gasket.

Length: 3620mm

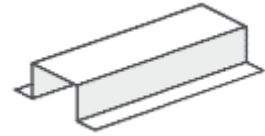
ExoTec® Top Hat



A rolled metal section, for use with ExoTec® facade panel and fixing system, designed to span across the building structure to support façade panels and isolate differential movement of the panels from those of the structure. 124mm wide x 35mm deep x 1.15mm gauge thick.

Length: 6000mm or 7200mm

James Hardie™ Intermediate Top Hat



A metal top hat for use with ExoTec® and ComTex® façade panel and fixing system, for intermediate sheet support. 50mm wide x 35mm deep x 1.15mm gauge thick

Length: 6000mm and 7200mm

James Hardie™ Façade washers



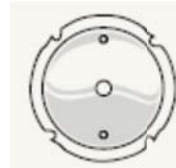
Façade washers used for exposed fastener fixing with ExoTec® façade panel and fixing system and Scyon™ Matrix™ cladding.

James Hardie™ Joint Sealant



A general purpose, paintable, exterior grade polyurethane joint sealant.

HardieBlade™ Saw Blade



A 185mm or 254mm diameter poly-diamond blade for fast and clean cutting of James Hardie fibre cement