

## Facade systems

# Installation guide

ExoTec® facade panel  
and fixing system



**James Hardie**  
A smarter way to build

AUSTRALIA JANUARY 2012

## CONTENTS

1	INTRODUCTION	2
2	INSTALLATION OVERVIEW	3
3	PRODUCT INFORMATION	4
	ExoTec® facade panel	4
	Accessories/tools supplied by James Hardie	4
	Accessories/tools not supplied by James Hardie	4
4	SAFE WORKING PRACTICES	5
	Warning	5
	Recommended safe working practices	5
	Working instructions	5
	Hole-forming	5
	Storage and handling	5
	Quality	5
5	PREPARATION	6
6	PANEL AND TOP HAT LAYOUT	7
7	INSTALLATION	8
	Top hat	8
	Panel	9
	Fastening methods - countersunk	10
	Fastening methods - exposed	11
	Backing strip installation	12
	Sealant filled joints	13
	Curved facades	13
8	MOVEMENT JOINTS	13
9	JUNCTIONS	14
	Base slab	14
	Head slab	15
	Soffit junction	15
10	EXTERNAL CORNERS	16
11	INTERNAL CORNERS	17
12	WINDOWS	18
13	PARAPET DETAILS	21
14	FINISHING	21
	General	21
	Panels exposed to direct sunlight	21
15	MAINTENANCE	22
16	WARRANTY	23

# 1 INTRODUCTION

The James Hardie ExoTec® facade panel provides a durable, expressed joint panel appearance for building facades and fascias and together with the ExoTec® fixing system, offers versatility to architects and builders. A variety of design styles can be created including curved walls, panels installed upright vertically, horizontally or in a brick pattern.

A wide range of decorative finishes can be used including site-applied acrylic textures and available factory-applied polyurethane plain colours and metallic finishes.

This document is a guide only. It is intended for use by builders, cladding installers and other contractors who may be involved with the installation of the ExoTec facade panel and fixing system.

This document must be read in conjunction with the project specific drawings and specifications as well as the current James Hardie ExoTec facade panel and fixing system Technical Specification.

Both the 9mm and 12mm thick ExoTec facade panels may be used in wall facades, fascias and soffits.

### **If you are an installer...**

Ensure that you follow the design, moisture management and associated details and material selection provided by the designer. This installation manual must be read in conjunction with the ExoTec facade panel technical specification.

### **If you are a specifier...**

or other responsible party for a project, ensure the information in these specifications is appropriate for the application you are planning and that you undertake specific design and detailing for areas which fall outside the scope of these specifications.

### **Make sure your information is up to date**

When specifying or installing James Hardie products, ensure you have the current manual. If you're not sure you do, or you need more information, visit [www.jameshardie.com.au](http://www.jameshardie.com.au) or Ask James Hardie™ on 13 11 03

### **NOTE**

All dimensions shown are in millimetres unless noted otherwise. All Australian Standards referenced in this manual are current edition and must be complied with.

## WE VALUE YOUR FEEDBACK

To continuously improve the development of our products and systems, we value your input. Please send any suggestions, including your name, contact details, and relevant sketches to:

Ask James Hardie™

Fax 02 9638 9535

[literaturefeedback@jameshardie.com.au](mailto:literaturefeedback@jameshardie.com.au)

## 2 INSTALLATION OVERVIEW

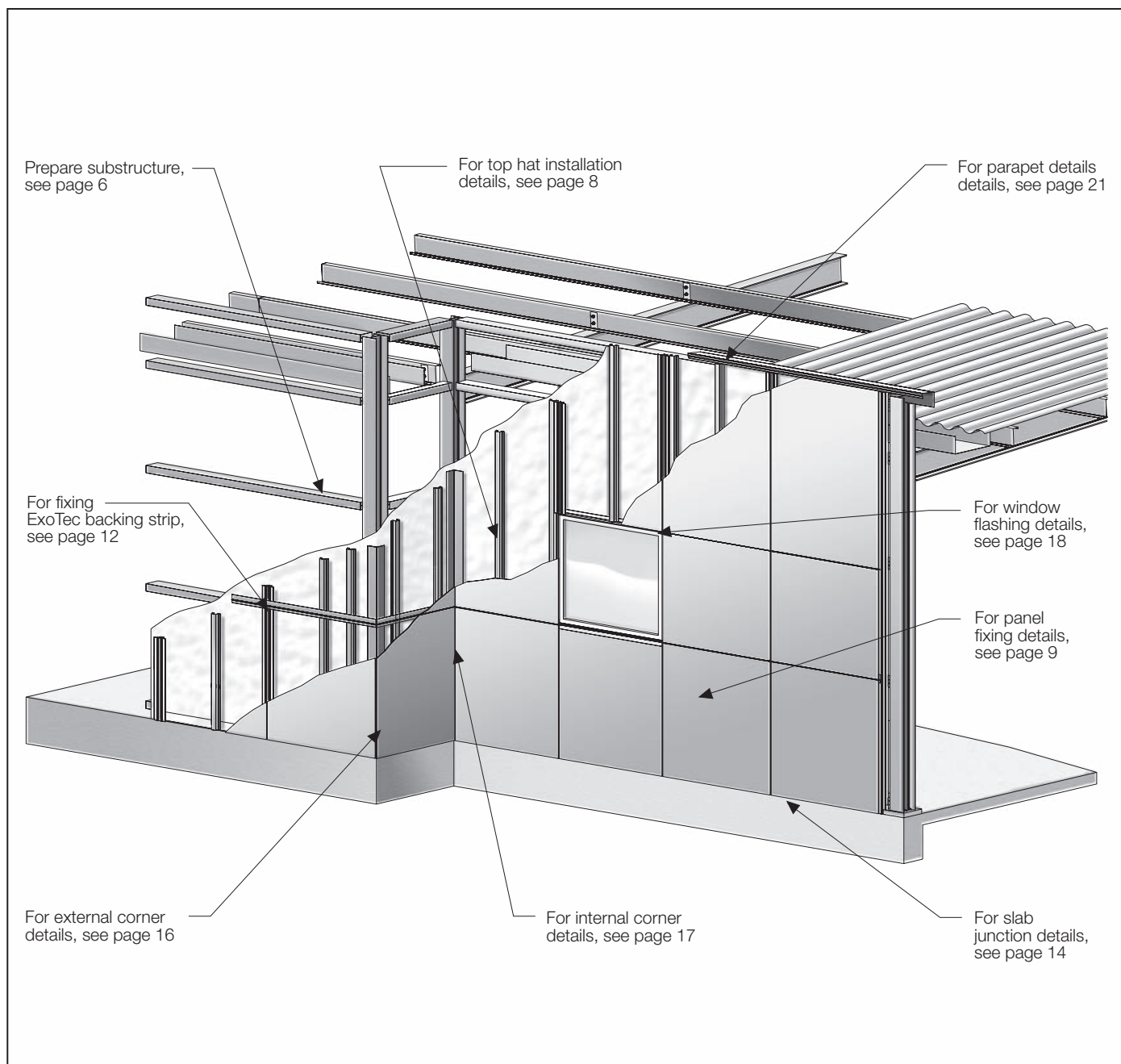
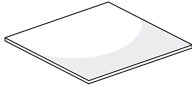


FIGURE 1 INSTALLATION OVERVIEW

# 3 PRODUCT INFORMATION

TABLE 1

EXOTEC FACADE PANEL INFORMATION			
PRODUCT	 <b>DESCRIPTION</b> <b>ExoTec facade panel</b> Dense compressed panel. Square edge. Factory sealed on all six sides. Each panel has a distinctive white face, which accepts a wide range of paint finishes. The panel must be installed with the white side facing the exterior of the structure. Nom. density: 1550kg/m³	QUANTITY / SIZE (NOMINAL)	
		Thickness	Width
		Lengths	
		9mm	900mm 1200mm
		12mm	1200mm
			1800, 2400, 3000 1800, 2100 2400, 2700, 3000 2400, 3000

\*All dimensions and masses are approximate and subject to manufacture tolerances.

TABLE 2

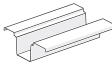
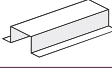
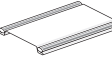
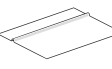




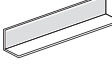

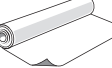



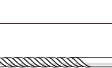

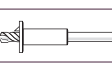


PRODUCT / ACCESSORIES / TOOLS SUPPLIED BY JAMES HARDIE		
ACCESSORIES	DESCRIPTION	QUANTITY/SIZE (APPROX)
	<b>ExoTec® Top Hat</b> A rolled metal section, for use with Exotec® facade panel and fixing system, designed to span vertically across the building structure to support facade panels and isolate differential movement of the panels from those of the structure. 124mm wide x 35mm deep x 1.15mm gauge thick. (Approximately)	45 per pack 6,000mm (304572) 7,200mm (304571)
	<b>James Hardie™ Intermediate Top Hat</b> A metal top hat installed vertically for use with ExoTec® and ComTex® facade panel and fixing system, for intermediate sheet support. 50mm wide x 35mm deep x 1.15mm gauge thick. (Approximately)	50 per pack 6,000mm (302701) 7,200mm (302700)
	<b>Exotec® Gasket Snap Strip. 3,620mm long</b> For use with the ExoTec® facade panel and fixing system, this gasket snap strip is specially designed to clip into the ExoTec® Top Hat at vertical facade panel joints to cover fixings to the structure and to provide an initial weather seal and drainage using a neoprene gasket.	10 per pack (305556)
	<b>James Hardie™ Backing Strip. 1,190mm, 2390mm, 2990mm</b> A weather seal at horizontal panel joints for use with ExoTec® facade panel and fixing system and Scyon™ Matrix™ cladding.	10 per pack 1,190mm (305557) 2,390mm (305558) 2,990mm (305559)
	<b>James Hardie™ Façade Washers</b> Facade washers used for exposed fastener fixing with ExoTec® facade panel and fixing system and Scyon™ Matrix™ cladding.	1000 per bag (305565)
	<b>James Hardie™ Base Coat. 4kg tub, 15kg bag</b> A water-resistant base coat compound used to finish over countersunk fasteners with epoxy.	4 per box - 4kg, 1 each - 15kg 4kg tub (305535) 15kg bag (305591)
	<b>James Hardie™ Joint Sealant, 300ml cartridge</b> A general purpose, paintable, exterior grade polyurethane joint sealant.	20 per box (305534)
<b>TOOLS</b>		
	<b>HardieBlade™ Saw Blade. 185mm diameter</b> A 185mm diameter poly-diamond blade for fast and clean cutting of James Hardie fibre cement.	1 Each (300660)

TABLE 3

PRODUCT / ACCESSORIES / TOOLS NOT SUPPLIED BY JAMES HARDIE			
James Hardie recommends the following products for use in conjunction with ExoTec facade system. James Hardie does not supply these products and does not provide a warranty for their use. Please contact component the manufacturer for information on their warranties and further information on their products.			
ACCESSORIES	DESCRIPTION	ACCESSORIES	DESCRIPTION
	<b>Miscellaneous light gauge pressed metal section</b> Sections 1mm minimum to 1.2mm thickness (maximum) corrosion resistant metal. Used in internal and external corner details.		<b>Epoxy flush sealing (2 part)</b> Countersunk head screws are flush sealed using megapoxy P1 or Hilti CA 125. Where the temperature is below 15° use Hilti CA 273.
	<b>Vapour permeable membrane</b> Must have the following properties in accordance with AS/NZS 4200.1: Vapour barrier - low or medium Water barrier - high		<b>Cordless drill</b> Recommended tool for drilling holes and fastening screws.
	<b>Bond breaker tape</b> Used when filling vertical joints to prevent sealant from bonding to top hat. Refer to the ExoTec facade panel and fixing system Installation Manual for suitable sealant.		<b>Base coat applicator</b> A recommended method of applying James Hardie base coat over epoxy filled countersunk screw heads. This method minimises waste. Base coat is easily sanded by comparison to epoxy fillers.
	<b>6mm masonry drill</b> Provides a 6.2mm to 6.3mm diameter hole. Used to pre-drill clearance holes for fasteners.		<b>Flexible tape</b> A flexible self-adhesive tape used in preparation of a window. Refer to the window installation section in this Installation Manual for more information.
	<b>Countersunk head drill</b> 6mm Countersunk bit.		
FASTENERS			
	<b>Countersunk fasteners</b> No. 10x30 countersunk head self drilling screws - Class 3 Minimum coating. Fasteners must have the appropriate level of durability required for the intended project. Fasteners must be fully compatible with all other material that it is in contact with to ensure the durability and integrity of assembly. Contact fastener manufacturers for more information.		<b>Exposed head fasteners</b> No. 10x25mm pan, wafer or hex head self drilling screws Class 3 minimum coating. Fasteners must have the appropriate level of durability required for the intended project. Fasteners must be fully compatible with all other material that it is in contact with to ensure the durability and integrity of assembly. Contact fastener manufacturer for more information.

# 4 SAFE WORKING PRACTICES

## WARNING - DO NOT BREATHE DUST AND CUT ONLY IN WELL VENTILATED AREA

James Hardie products contain sand, a source of respirable crystalline silica which is considered by some international authorities to be a cause of cancer from some occupational sources. Breathing excessive amounts of respirable silica dust can also cause a disabling and potentially fatal lung disease called silicosis, and has been linked with other diseases. Some studies suggest smoking may increase these risks. During installation or handling: (1) work in outdoor areas with ample ventilation; (2) minimise dust when cutting by using either 'score and snap' knife, fibre cement shears or, where not feasible, use a HardieBlade™ Saw Blade and dust-reducing circular saw attached to a HEPA vacuum; (3) warn others in the immediate area to avoid breathing dust; (4) wear a properly-fitted, approved dust mask or respirator (e.g. P1 or P2) in accordance with applicable government regulations and manufacturer instructions to further limit respirable silica exposures. During clean-up, use HEPA vacuums or wet cleanup methods - never dry sweep. For further information, refer to our installation instructions and Material Safety Data Sheets available at [www.jameshardie.com.au](http://www.jameshardie.com.au). FAILURE TO ADHERE TO OUR WARNINGS, MATERIAL SAFETY DATA SHEETS, AND INSTALLATION INSTRUCTIONS MAY LEAD TO SERIOUS PERSONAL INJURY OR DEATH.

### JAMES HARDIE RECOMMENDED SAFE WORKING PRACTICES

#### CUTTING OUTDOORS

1. Position cutting station so wind will blow dust away from the user or others in working area.
2. Use a dust reducing circular saw equipped with HardieBlade™ Saw Blade and HEPA vacuum extraction.

#### SANDING/DRILLING/OTHER MACHINING

When sanding, drilling or machining you should always wear a P1 or P2 dust mask and warn others in the immediate area.

#### IMPORTANT NOTES

1. NEVER use a power saw indoors.
2. NEVER use a circular saw blade that does not carry the HardieBlade™ logo.
3. NEVER dry sweep - Use wet suppression or HEPA vacuum.
4. NEVER use grinders.
5. ALWAYS follow tool manufacturers' safety recommendations.

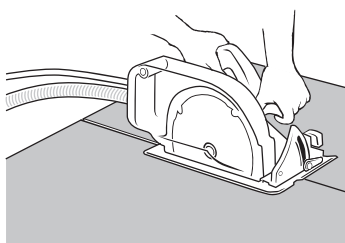
P1 or P2 respirators should be used in conjunction with above cutting practices to further reduce dust exposures. Additional exposure information is available at [www.jameshardie.com.au](http://www.jameshardie.com.au) to help you determine the most appropriate cutting method for your job requirements. If concern still exists about exposure levels or you do not comply with the above practices, you should always consult a qualified industrial hygienist or contact James Hardie for further information.

## WORKING INSTRUCTIONS

Refer to recommended safe working practices before starting any cutting or machining of product.

### HardieBlade™ Saw Blade

The HardieBlade™ Saw Blade used with a dust-reducing saw is ideal for fast, clean cutting of James Hardie fibre cement products. A dust-reducing saw uses a dust deflector or a dust collector which can be connected to a vacuum system. When sawing, clamp a straight-edge to the sheet as a guide and run the saw base plate along the straight edge when making the cut.



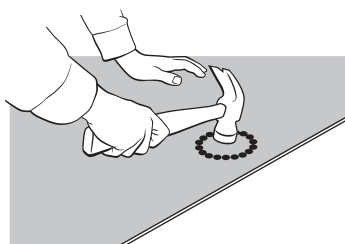
## HOLE-FORMING

### For smooth clean cut circular holes:

- Mark the centre of the hole on the sheet.
- Pre-drill a pilot hole.
- Using the pilot hole as a guide, cut the hole to the appropriate diameter with a hole saw fitted to a heavy duty electric drill.

### For irregular holes:

- Small rectangular or circular holes can be cut by drilling a series of small holes around the perimeter of the hole then tapping out the waste piece from the sheet face.
- Tap carefully to avoid damage to sheets, ensuring the sheet edges are properly supported.



## STORAGE AND HANDLING

To avoid damage, all James Hardie building products should be stored with edges and corners of the sheets protected from chipping.

James Hardie building products must be installed in a dry state and protected from rain during transport and storage. The product must be laid flat under cover on a smooth level surface clear of the ground to avoid exposure to water, moisture, etc.

## QUALITY

James Hardie conducts stringent quality checks to ensure any product manufactured falls within our quality spectrum. It is the responsibility of the builder to ensure the product meets aesthetic requirements before installation. James Hardie will not be responsible for rectifying obvious aesthetic surface variations following installation.

# 5 PREPARATION

Prior to installation of the ExoTec Facade Panel and Fixing System ensure that the required preparation steps have been followed, see Figure 2

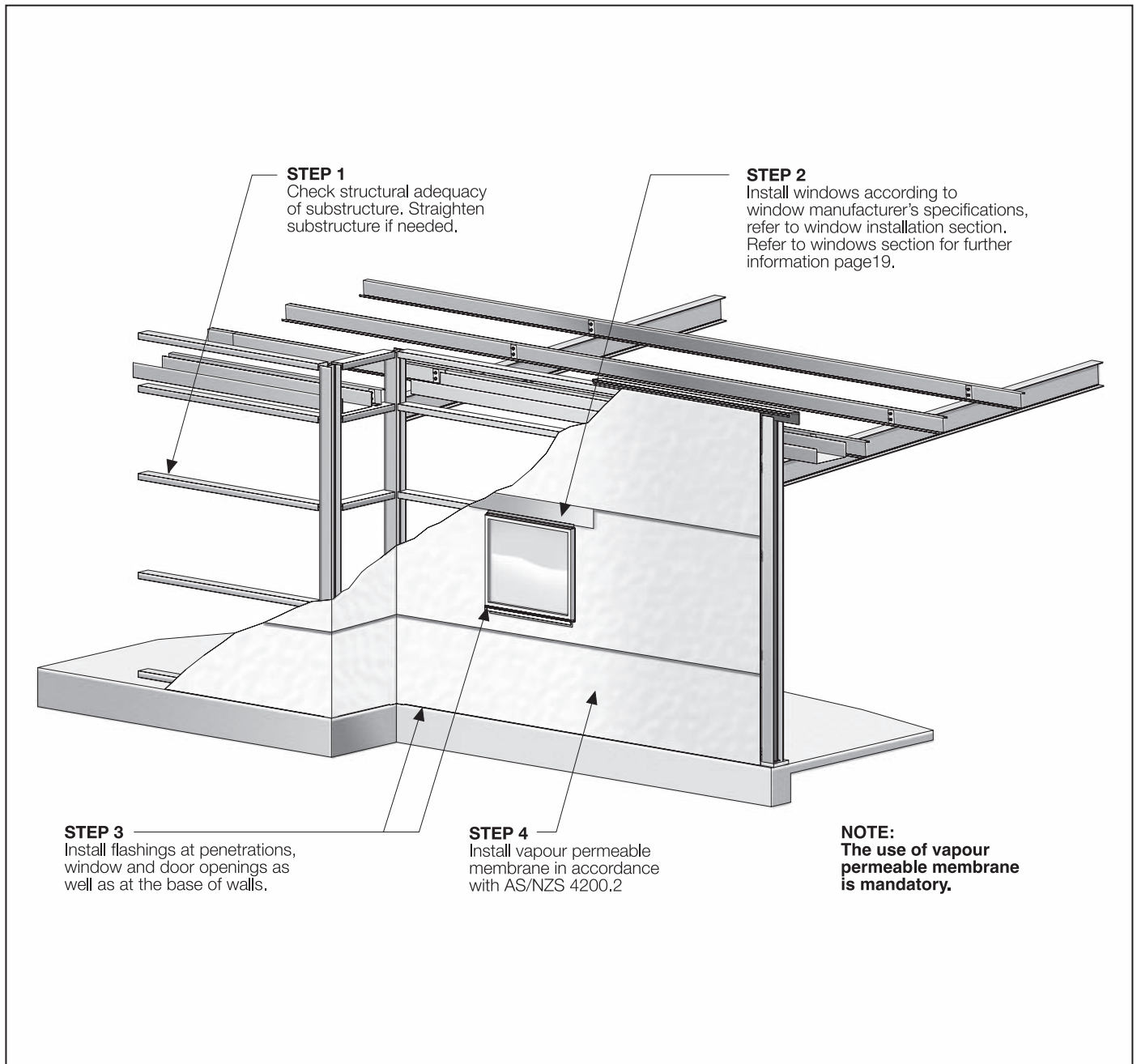


FIGURE 2 PREPARATION OF SUB-STRUCTURE

## NOTES

1. For high walls it may be necessary to provide flashing to drain the facade at one or more intermediate levels. The installation of any barrier must not restrict moisture from reaching flashings and draining out.
2. The engineer must limit the deflection of the supporting structure to  $\text{span}/250$  for serviceability Wind Load. See Clause 2.6 of the ExoTec facade panel and fixing system Technical Specification.

# 6 PANEL AND TOP HAT LAYOUT

The ExoTec facade panel can be installed upright horizontally or vertically. The panel layout will determine the location of the ExoTec and intermediate JH top hats, see Figures 3 to 6. The vertical expressed joints may be aligned or offset in a brick pattern layout.

## KEY

TH: ExoTec top hat

INT: Intermediate JH top hat

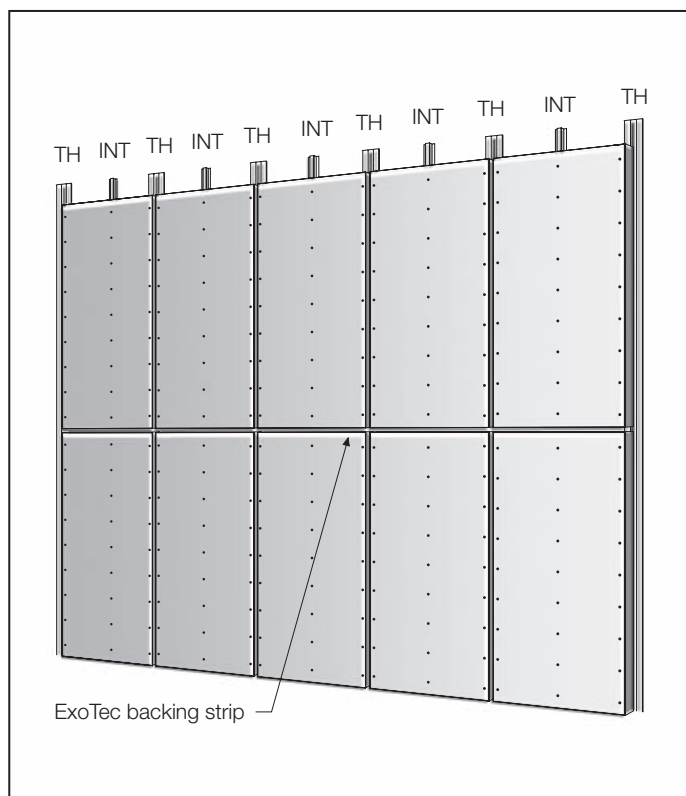


FIGURE 3 VERTICAL LAYOUT ALIGNED GRID PATTERN

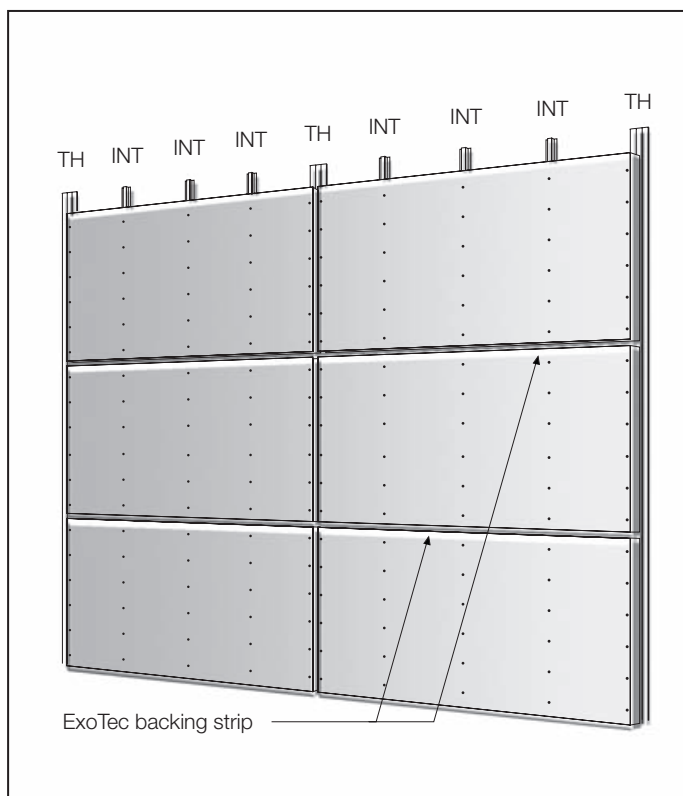


FIGURE 5 HORIZONTAL LAYOUT ALIGNED GRID PATTERN

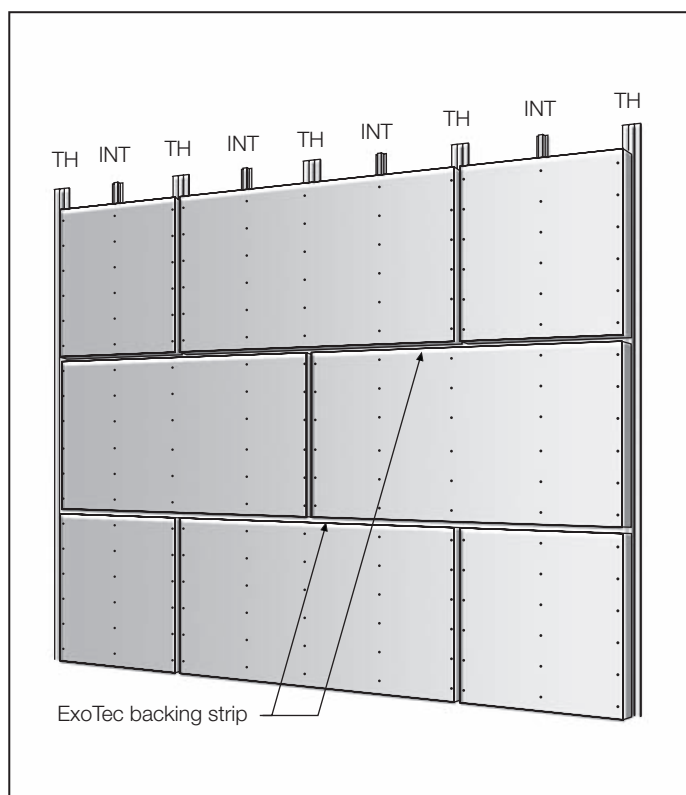


FIGURE 4 HORIZONTAL LAYOUT BRICK GRID PATTERN

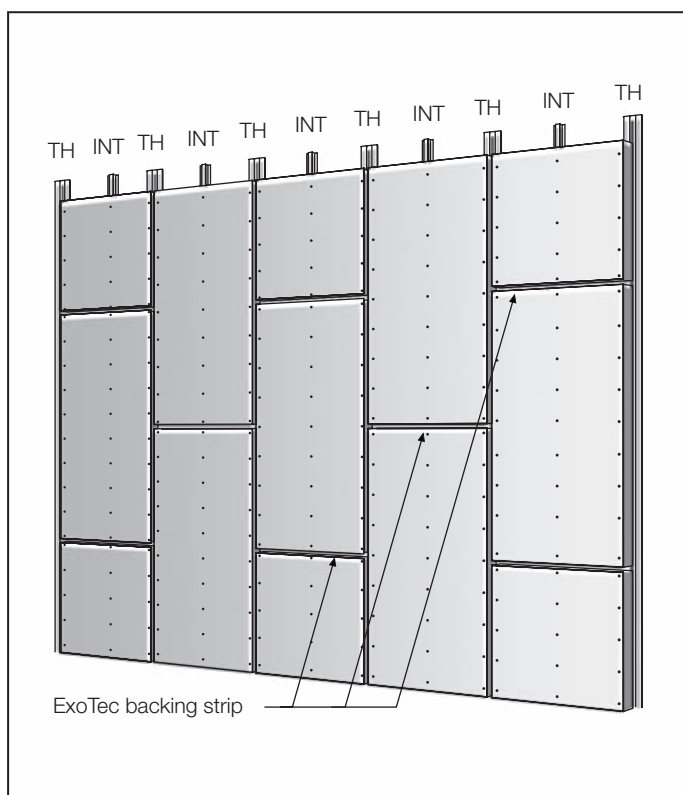


FIGURE 6 VERTICAL LAYOUT BRICK GRID PATTERN



# 7 INSTALLATION

## TOP HAT INSTALLATION

ExoTec facade panels must be fixed to:

- 1) ExoTec top hat for vertical sheet joints.
- 2) Intermediate JH top hat for supporting the panels between vertical sheet joints.

The top hats must be installed vertically over steel, masonry or timber structures, see Figure 7. The top hat fixing to the structure must be as per the engineer's detail.

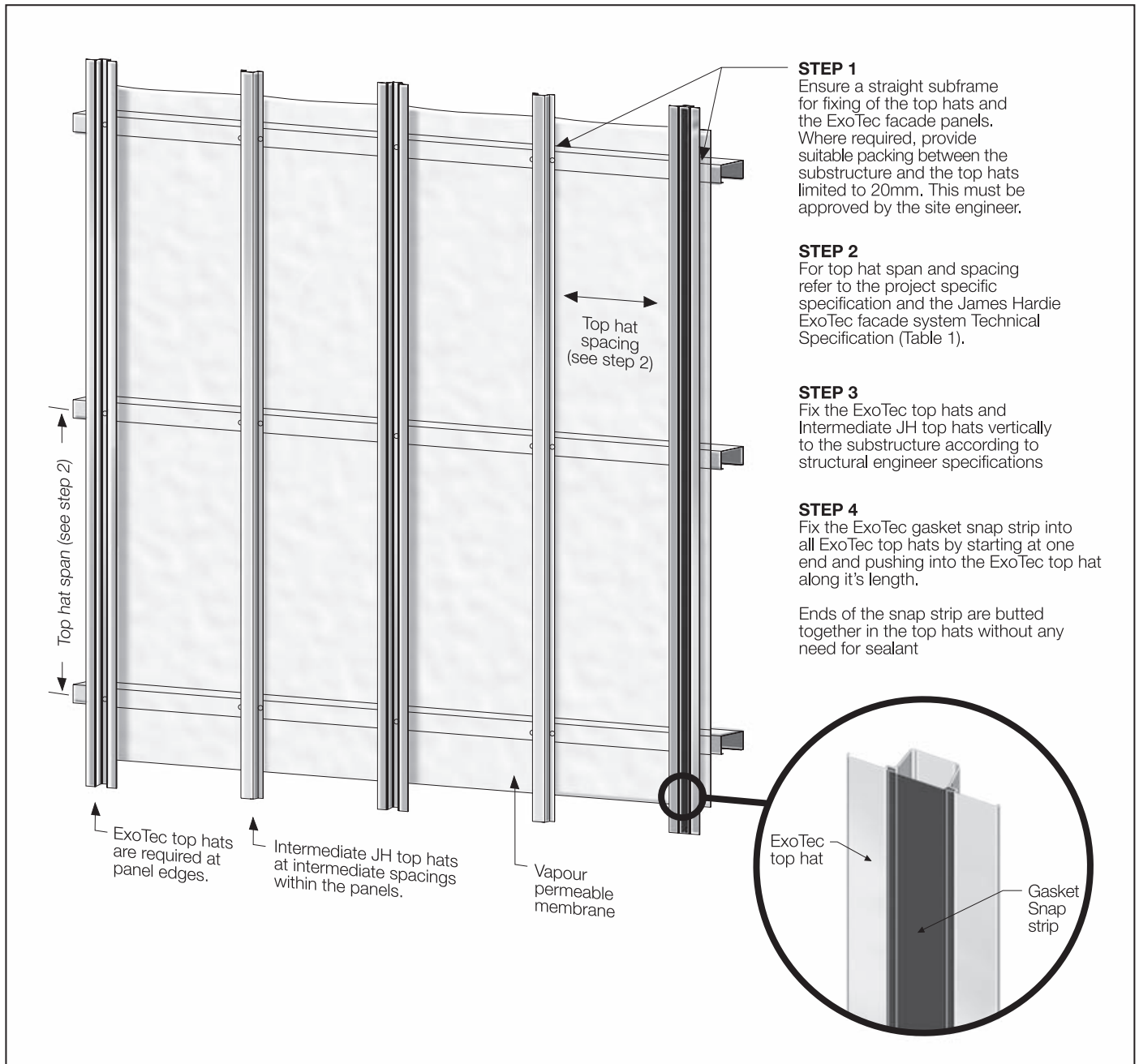


FIGURE 7 TOP HAT INSTALLATION



## PANEL INSTALLATION

Panels are installed with a 10mm nominal expressed joint between adjacent panels, vertically and horizontally. Vertical joints up to 20mm width can be formed, with additional care required at installation to ensure the panel edges cover the ExoTec gasket snap strip on both sides of the joint. A minimum vertical expressed joint of 6mm is allowed with care. Horizontal joints are a nominal 10mm.

## NOTE

When applying sealant to the edge of the ExoTec facade panel, refer to page 13 for recommended sealants.

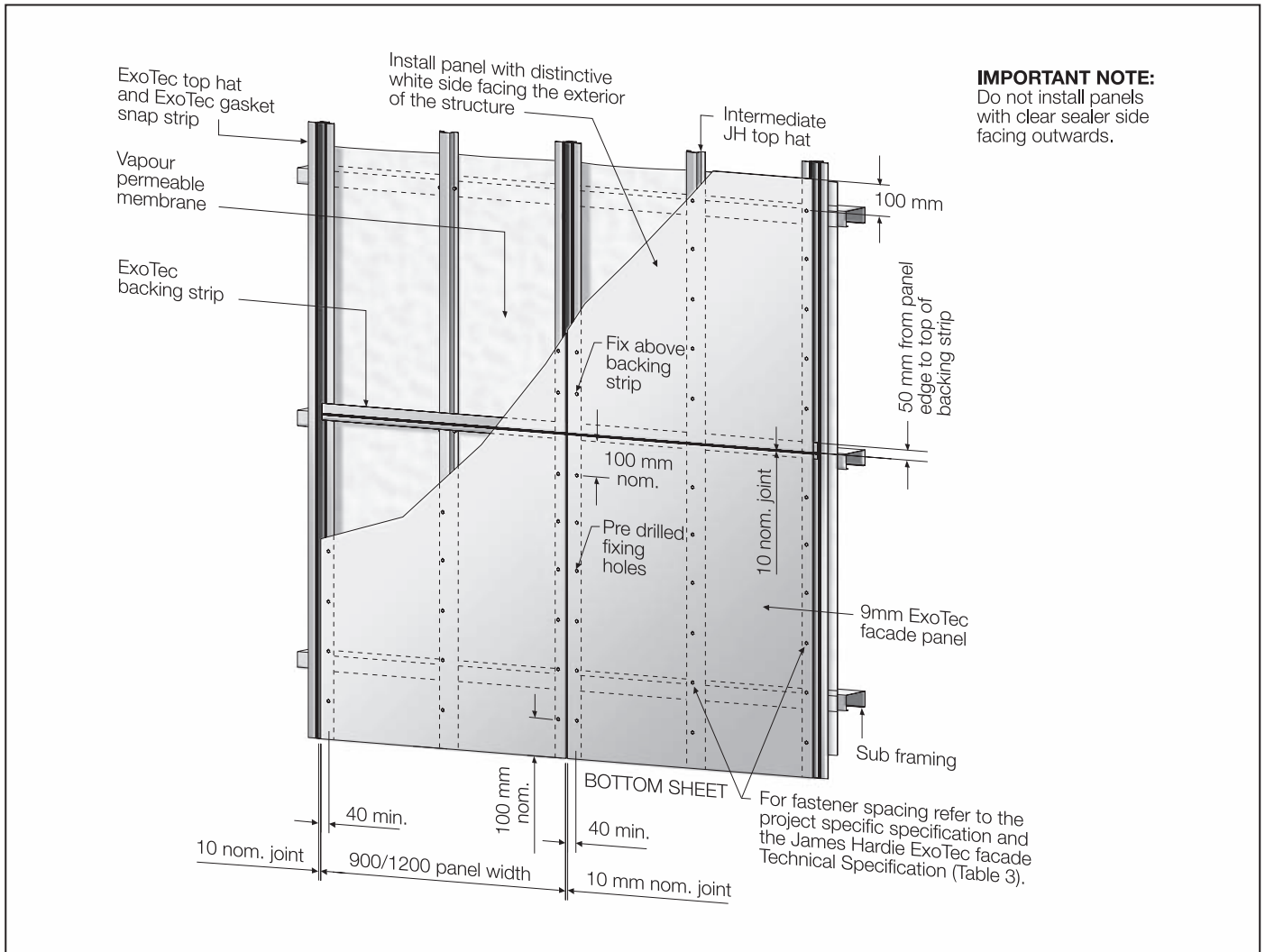


FIGURE 8 TYPICAL PANEL AND FRAMING LAYOUT

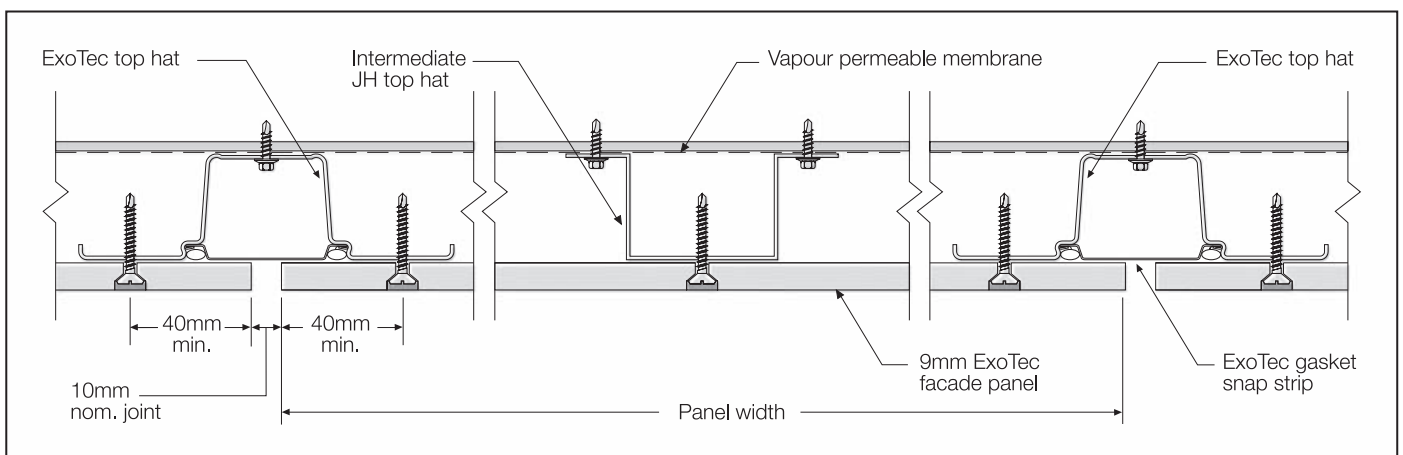


FIGURE 9 TOP HAT AND PANEL FIXING DETAIL

## FASTENING METHODS

Panels may be fixed to ExoTec top hats and intermediate JH top hats by either:

1. **Countersunk fasteners:** flush finished over screw heads with a suitable epoxy, and then with James Hardie base coat. Generally used with site-applied acrylic coatings.
2. **Exposed head screws:** using pan, wafer or hex head screws. Used where pre-finished panels are installed. Exposed head fasteners may be colour coated to match panel finish.

Fasteners must have the appropriate level of durability required for the intended project. This is of particular importance in coastal areas, subject to salt spray and other corrosive environments.

Fasteners must be fully compatible with all other materials that the fasteners will come in contact with, to ensure the durability and integrity of assembly.

See Tables 3 and 4, for maximum fastener spacings to top hats for design wind pressure in the current ExoTec facade panel and fixing system Technical Specification.

Contact fastener manufacturers for more information.

### Countersunk Fasteners

1. Mark fastener locations as specified, see Figure 8.
2. Drill clearance holes into ExoTec facade panel, for No.10 gauge screws using a 6mm countersunk masonry drill, which provides a 6.2 to 6.3mm diameter hole, see Figure 10. countersink hole to a depth of 2.5mm to 3mm. This is measured from the top of the screw to the top of the sheet, see Figure 15.

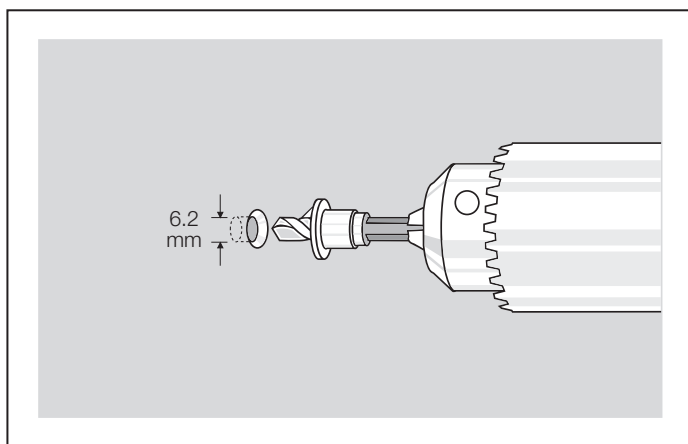


FIGURE 10 DRILL COUNTERSINK HOLE

### NOTE

Do not use hammer action.

3. Fasten panel into top hat with corrosion resistant (Class 3 min.) No. 10 gauge x 30mm countersunk head self drilling fasteners. For areas within a corrosive environment refer to fastener manufacturer for suitability and compatibility of fasteners.
4. Clean dust out of holes to ensure adhesion of epoxy sealer.
5. Mix only sufficient epoxy for immediate use. James Hardie recommends the use of megapoxy P1 or Hilti CA 125. Where the temperature is below 15°C, use Hilti CA 273.
6. Cover countersink fastener with epoxy leveled flush with sheet. To accommodate for second coat do not overfill hole. Allow epoxy to cure.

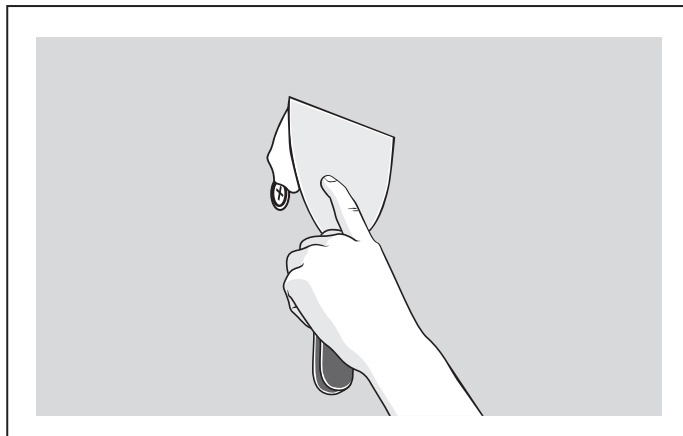


FIGURE 11 COVER COUNTERSINK FASTENER WITH EPOXY

7. Apply James Hardie base coat over epoxy using the base coat applicator. See Figures 12, 13, and 14.

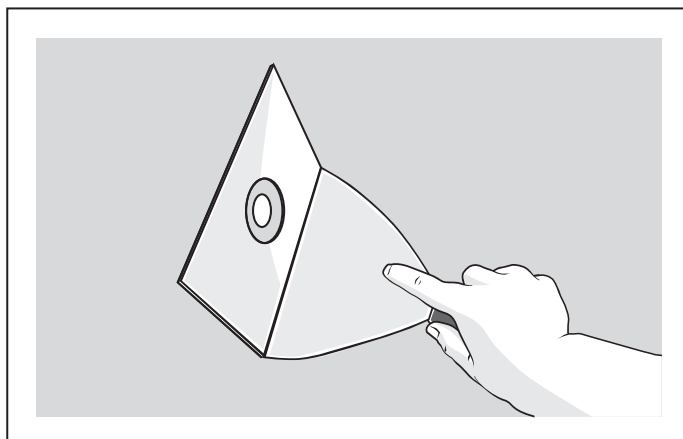


FIGURE 12 FIX BASE COAT APPLICATOR OVER EPOXY FILLED SCREW HEAD

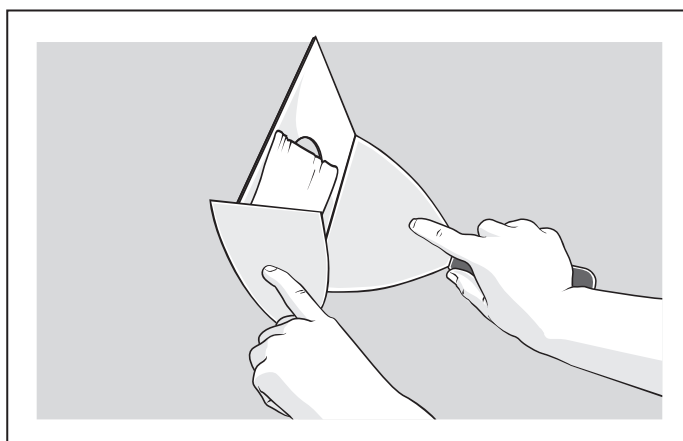
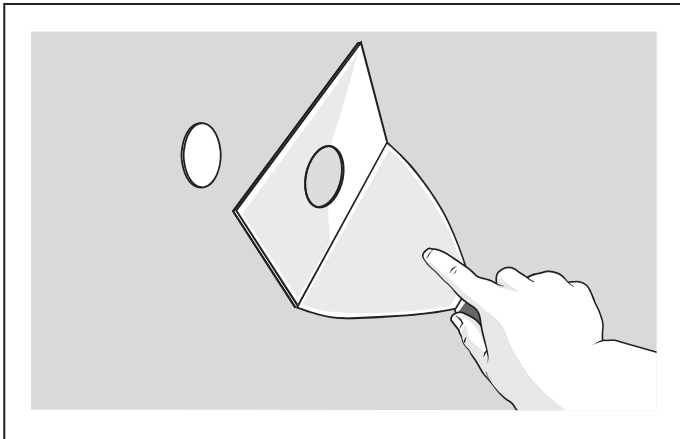
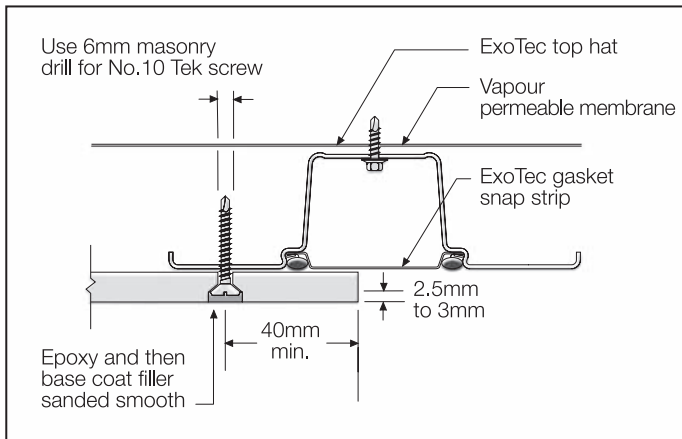


FIGURE 13 APPLY JAMES HARDIE BASE COAT OVER EPOXY FILLED SCREW HEAD



**FIGURE 14 SCREW HEAD COVERED BY EPOXY AND JH BASE COAT**

8. Sand James Hardie base coat smooth when cured with 100-120 grit sandpaper.



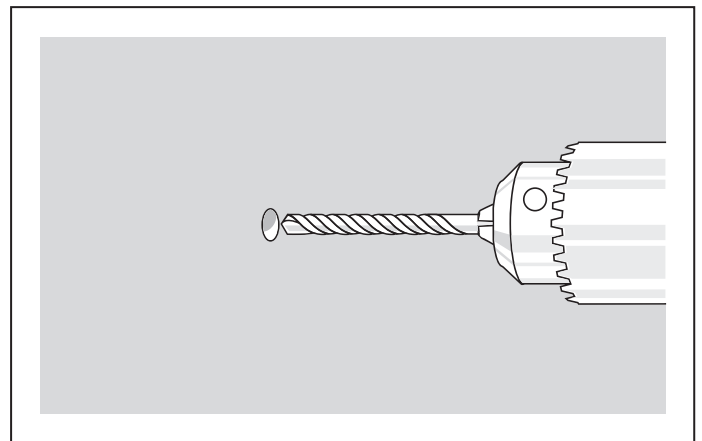
**FIGURE 15 COUNTERSUNK FASTENER DETAIL**

**NOTE**

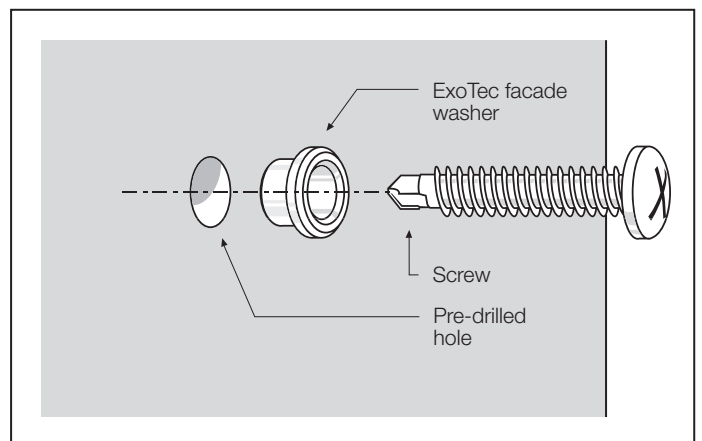
Do not use hammer action.

**Exposed Head Fasteners**

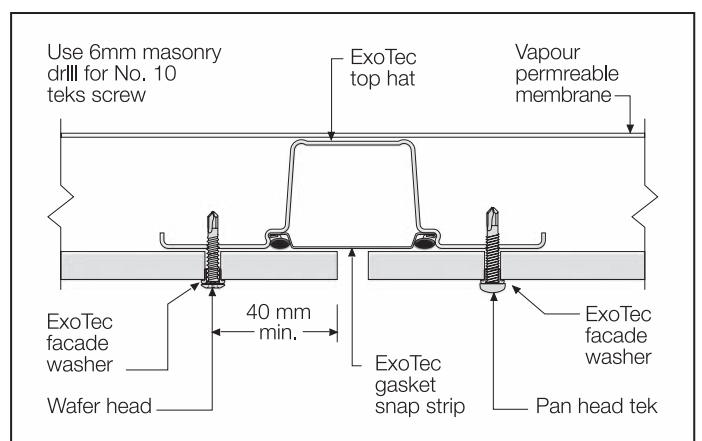
1. Mark fastener locations as specified (see Figure 8).
2. Drill clearance holes for No.10 gauge screws using a 6mm masonry drill, which provides a 6.2 to 6.3mm diameter hole.
3. Fasten panel using corrosion resistant (minimum class 3) No. 10 gauge x 25mm pan, wafer or hex head self drilling screw into top hat. For areas within a corrosive environment, refer to fastener manufacturer for suitability and compatibility of fasteners and relevant standard.
4. For exposed head fasteners, ExoTec facade washers are recommended to be inserted between the panel and the fastener.



**FIGURE 16 DRILL CLEARANCE HOLE**



**FIGURE 17 WASHER AND SCREW INSTALLATION**



**FIGURE 18 EXPOSED HEAD FASTENER DETAIL**

## BACKING STRIP INSTALLATION

At horizontal panel joints, ExoTec backing strips are adhered along the back top edge of the ExoTec facade panel prior to panel installation.

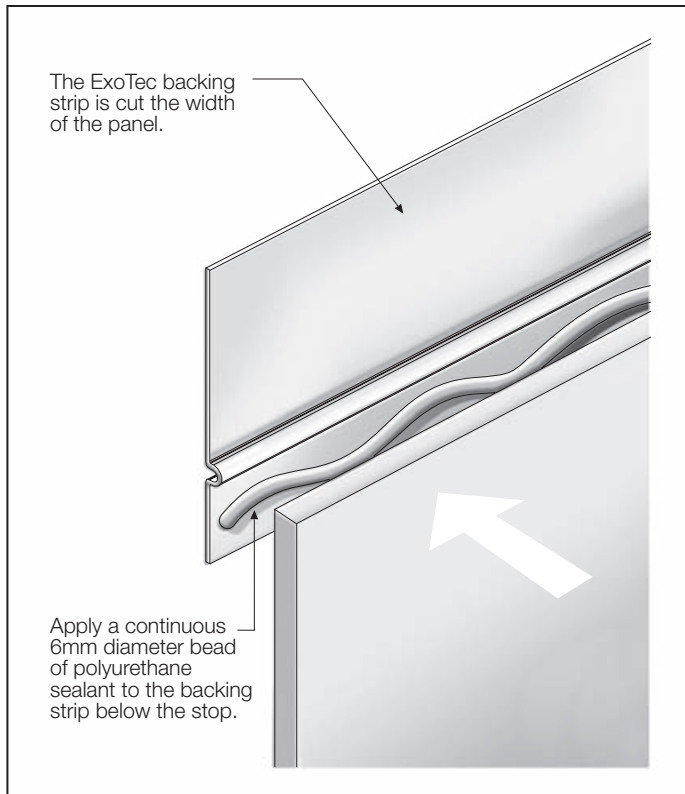


FIGURE 19 APPLYING SEALANT TO EXOTEC BACKING STRIP

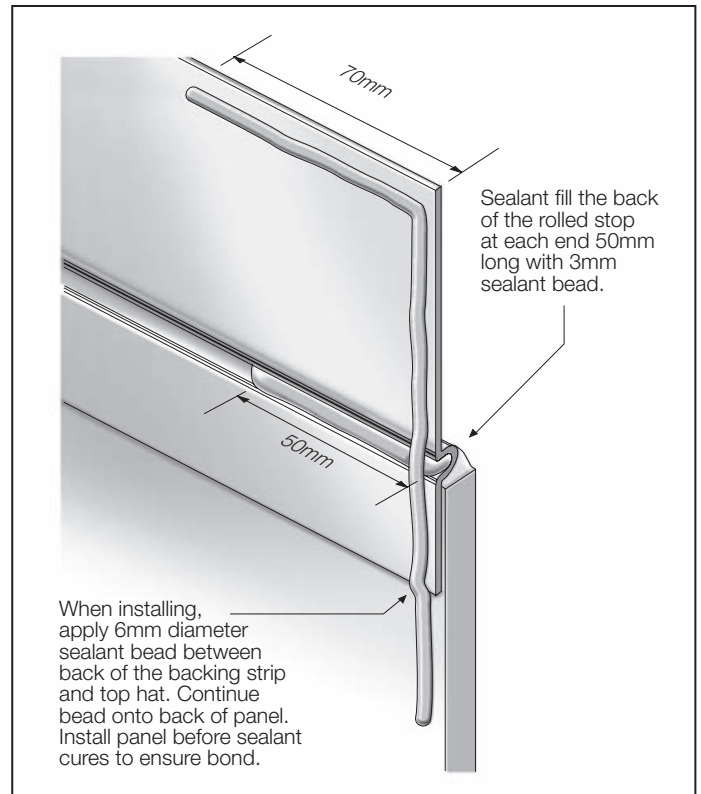


FIGURE 21 SEALING EXOTEC BACKING STRIP END DETAIL

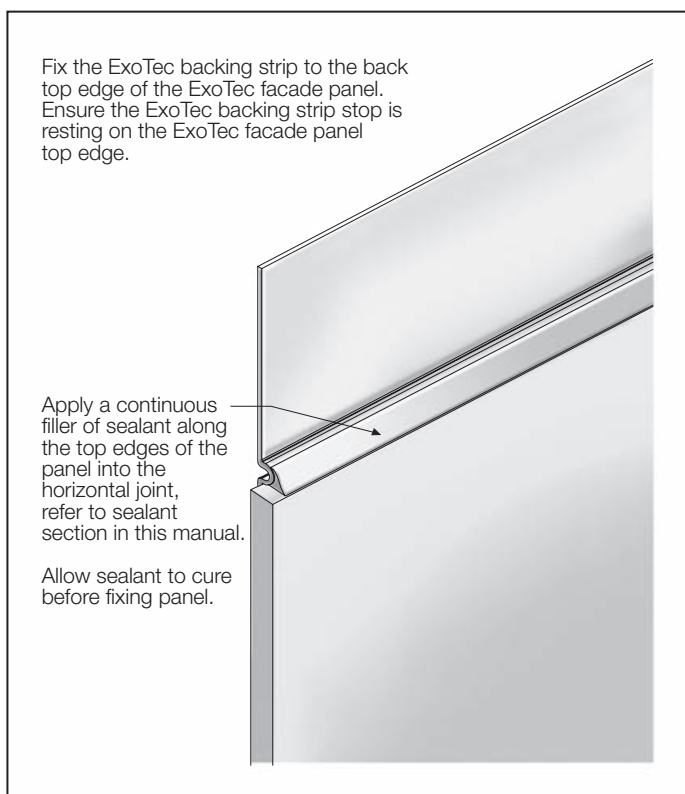


FIGURE 20 APPLYING SEALANT TO HORIZONTAL JOINT

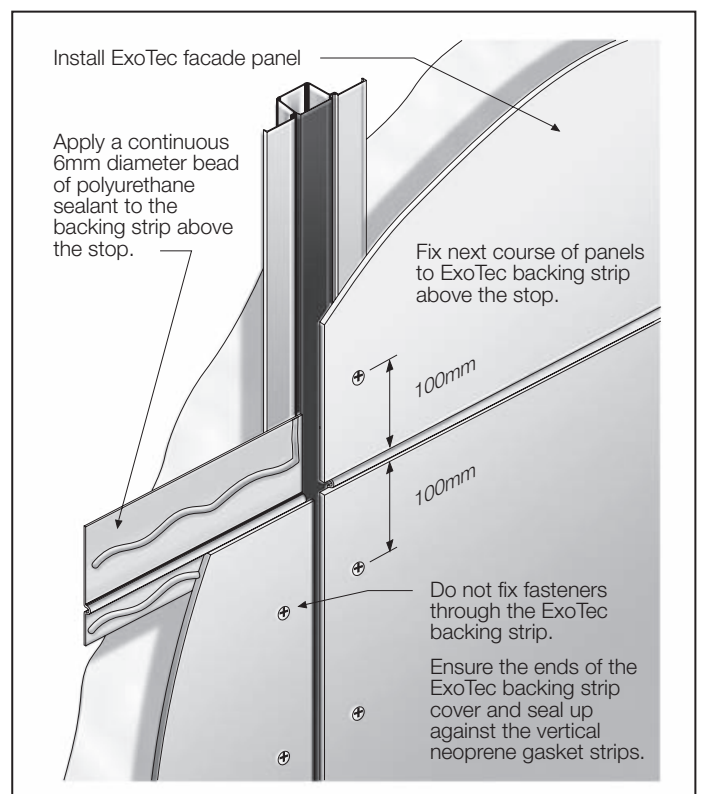


FIGURE 22 INSTALLING NEXT COURSE OF PANELS DETAILS

# 8 MOVEMENT JOINTS

## SEALANT FILLED JOINTS

For design wind pressures including and above 4.0kPa, all horizontal and vertical joints must be continuously sealed over bond breaker tape.

Where joints are required to be sealant filled, James Hardie Joint sealant and Bostik Seal 'n' flex are recommended. Where vertical joints are sealed, a bond breaker tape must be installed behind the sealant.

## CURVED FACADES

The ExoTec facade panel and fixing system can be used to follow curved walls as described below:

### For radii 10m or greater

Use 9mm thick ExoTec facade panels which can be easily bent to the curve of the frame. ExoTec facade panels are to be fixed in a horizontal orientation only. Refer to Table 4 for maximum top hat spacing.

TABLE 4

MAX. TOP HAT SPACING FOR VARIOUS RADII

RADII (m)	MAX. TOP HAT SPACING (mm)	
900mm wide panels	1200mm wide panels	
10 to 15	300	400
>15	450	To suit wind loading

## NOTES

1. The closer the spacing of top hats, the less likely they will read through as facets in the panels, particularly at a small radii.
2. 9mm thick panels may be able to be curved to a smaller radius, but this is likely to overstress panels.

## NOTE

When fixing curved sheets, commence fixing from the centre and work outwards to avoid "drumminess".

Particular care should be taken when curving panels to ensure the supports are on a true curve. If not, apart from poor appearance, there is a risk of locally over-stressing the panels and causing cracking.

Alternate materials and installation methods are available for radii less than specified above including, glass reinforced cement (GRC) installed according to manufacturer's specifications.

For further information on curved facades contact Ask James Hardie™ on 13 11 03.

Movement joints are required to limit or remove stresses from the panels. Movement joints are provided by the nominal 10mm expressed or sealant filled joints at the perimeter of the panels.

Vertical structural joints may be required in the cladding to coincide with structural joints in the structure to accommodate the anticipated movement.

Horizontal structural joints are required at slab level where the framing supporting the top hats moves with the creep deflection in the slab.

For details of abutment to masonry walls, refer page 7 in the ExoTec facade panel and fixing system Technical Specification.

For more information on movement joints, refer page 6 in the ExoTec facade panel and fixing system Technical Specification.

## NOTE

The project engineer is responsible for specifying the anticipated movement.

# 9 JUNCTIONS

All the following CAD details are available at ACCEL™ [www.accel.com.au](http://www.accel.com.au).

## BASE SLAB JUNCTION

This junction can be treated in a number of ways, two of which are illustrated in Figures 23 and 25.

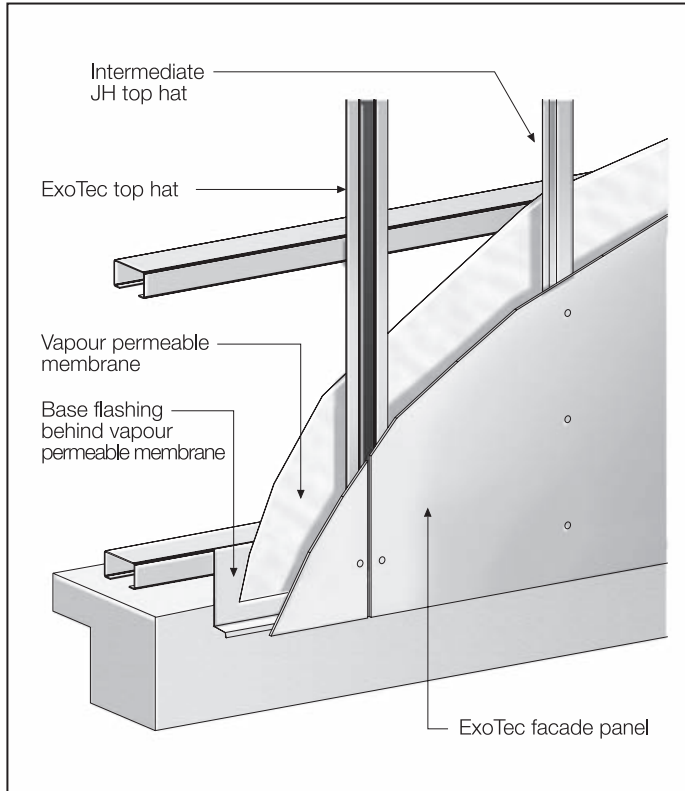


FIGURE 23 WALL BASE TYPICAL CUTAWAY DETAIL 1

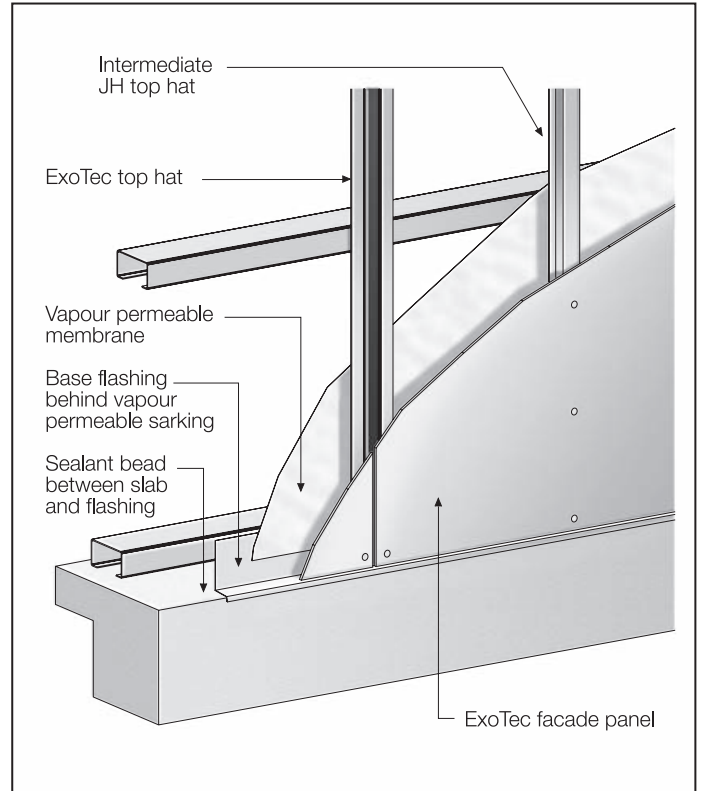


FIGURE 25 WALL BASE CUTAWAY TYPICAL DETAIL 2

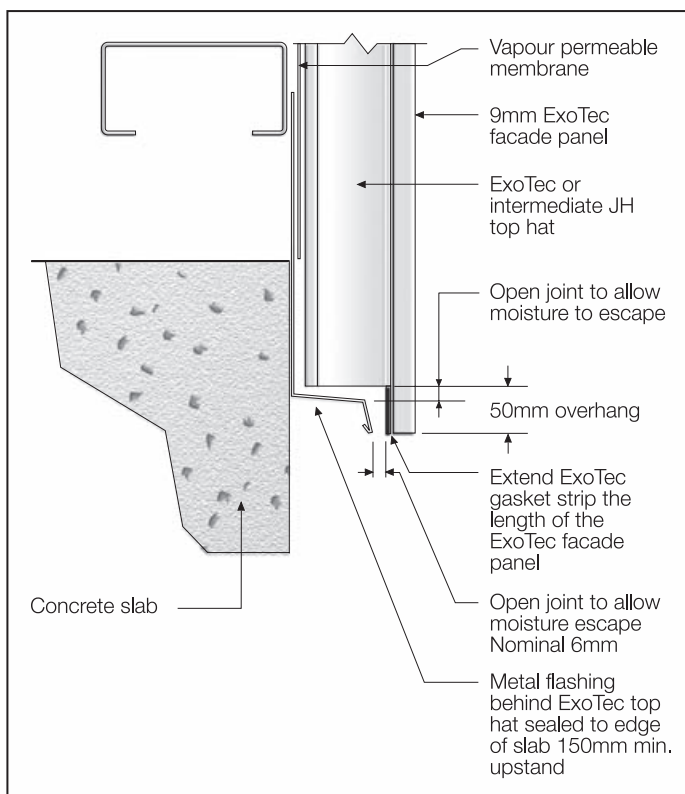


FIGURE 24 WALL BASE TYPICAL DETAIL 1

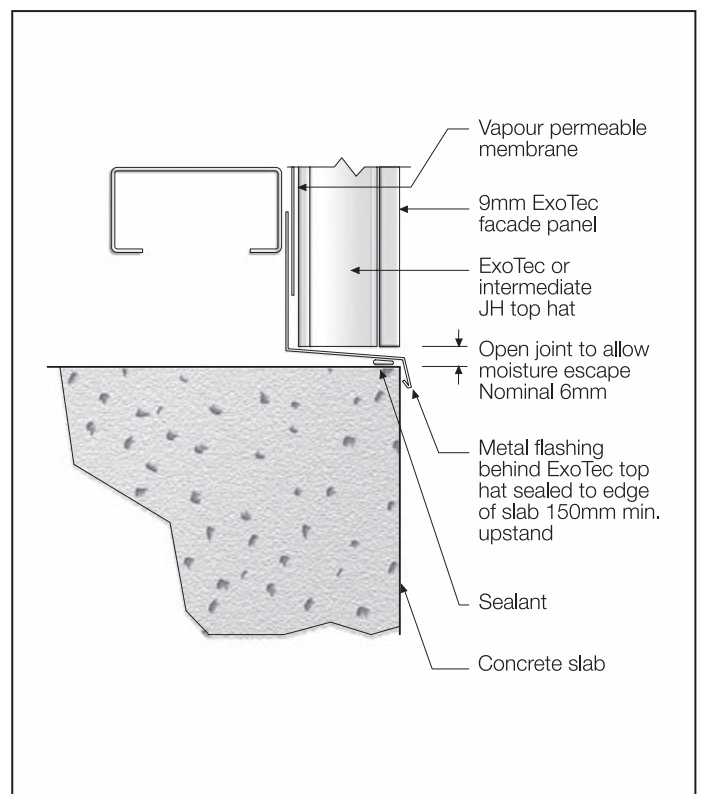


FIGURE 26 WALL BASE TYPICAL DETAIL 2

## HEAD SLAB JUNCTION

Where the cladding forms a junction with an exposed slab, the detail must accommodate for slab deflection. Refer to the structural engineer for appropriate recommendations. A typical deflection head detail is shown in Figure 27.

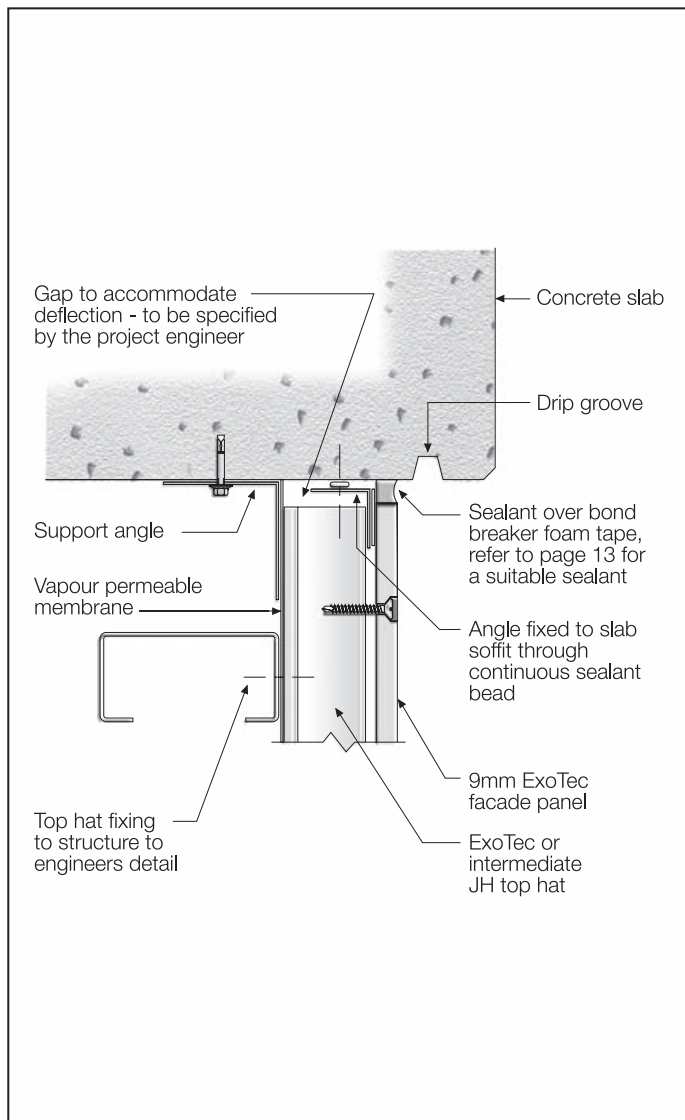


FIGURE 27 WALL DEFLECTION HEAD USED UNDER SLAB

## SOFFIT JUNCTION

There are many ways of detailing the soffit junction and it is important to ensure that a drip edge is provided. A typical approach to install the soffit fascia junction is shown in Figure 28. Ensure the ExoTec gasket snap strip is installed to the bottom of the fascia panel.

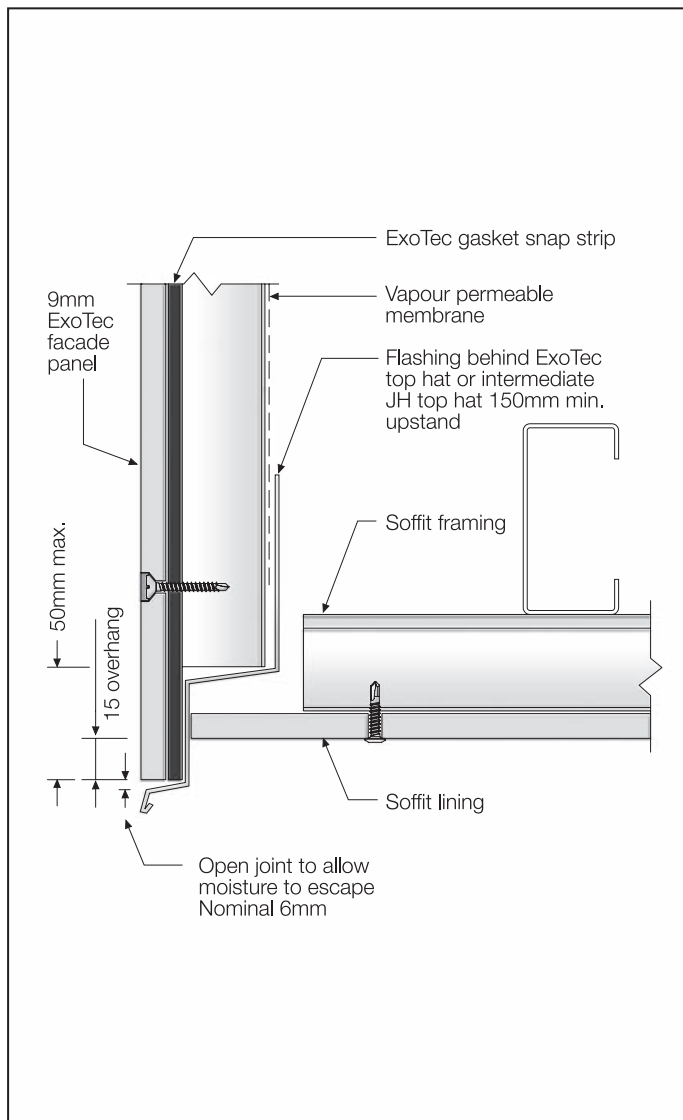


FIGURE 28 TYPICAL SOFFIT DETAIL

### NOTE

It is essential that a continuous flashing is provided behind the top hats at the base of the fascia to allow moisture to escape. See Table 5 of the ExoTec facade panel and fixing system Technical Specification for required height of the flashing upstand.



# 10 EXTERNAL CORNERS

This section contains various methods of finishing external corners using the ExoTec facade panel and fixing system

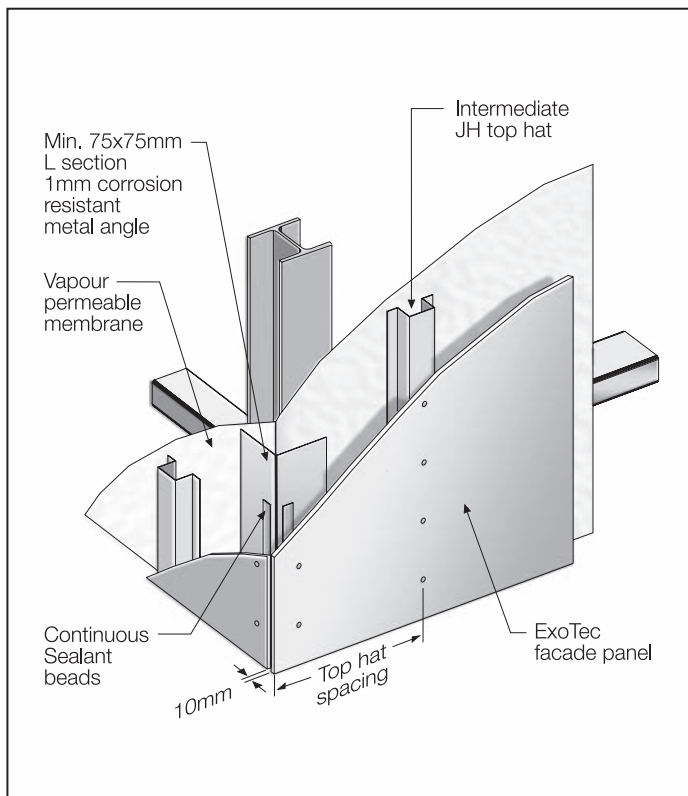


FIGURE 29 EXTERNAL CORNER CUTAWAY DETAIL

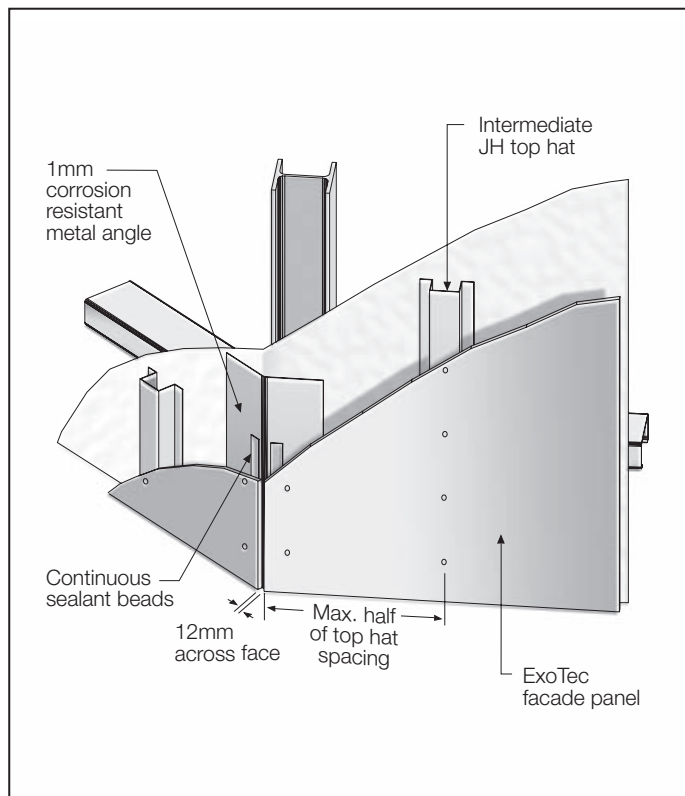


FIGURE 31 NON SQUARE EXTERNAL CUTAWAY CORNER

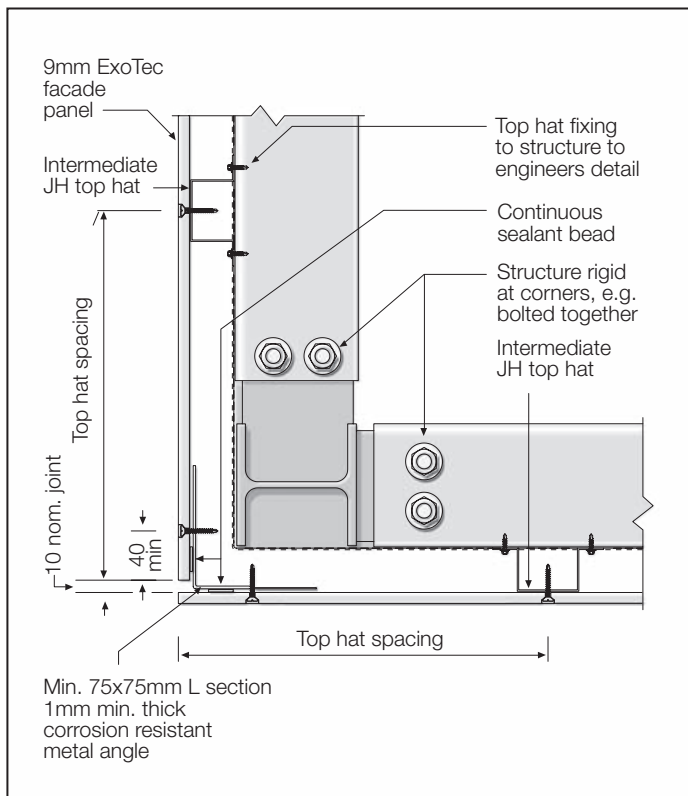


FIGURE 30 EXTERNAL CORNER DETAIL

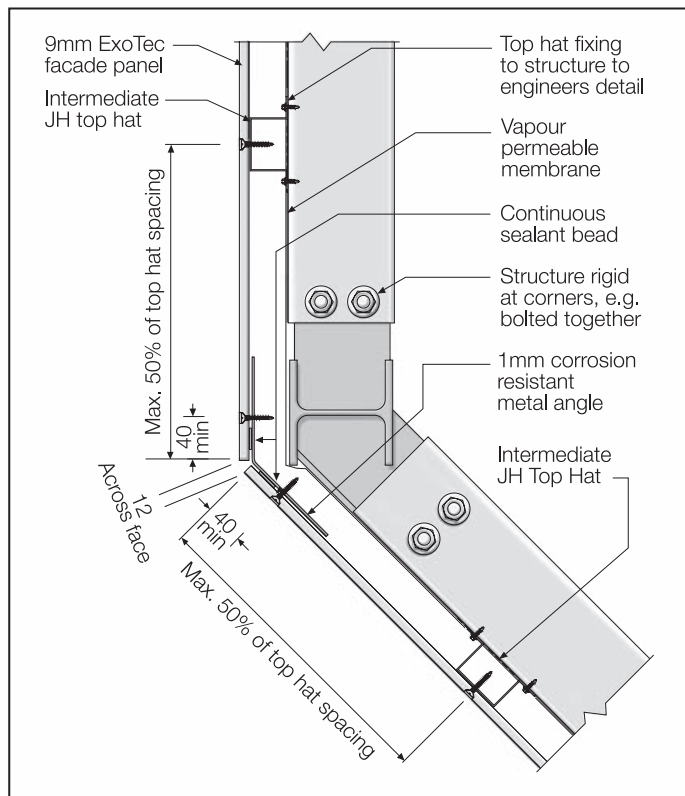


FIGURE 32 NON SQUARE EXTERNAL CORNER

# 11 INTERNAL CORNERS

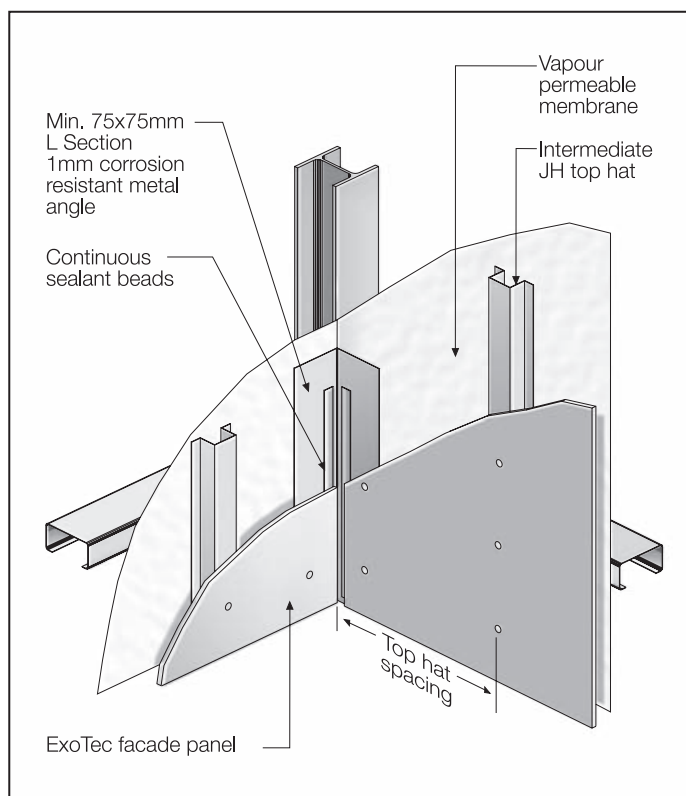


FIGURE 33 INTERNAL CORNER CUTAWAY DETAIL

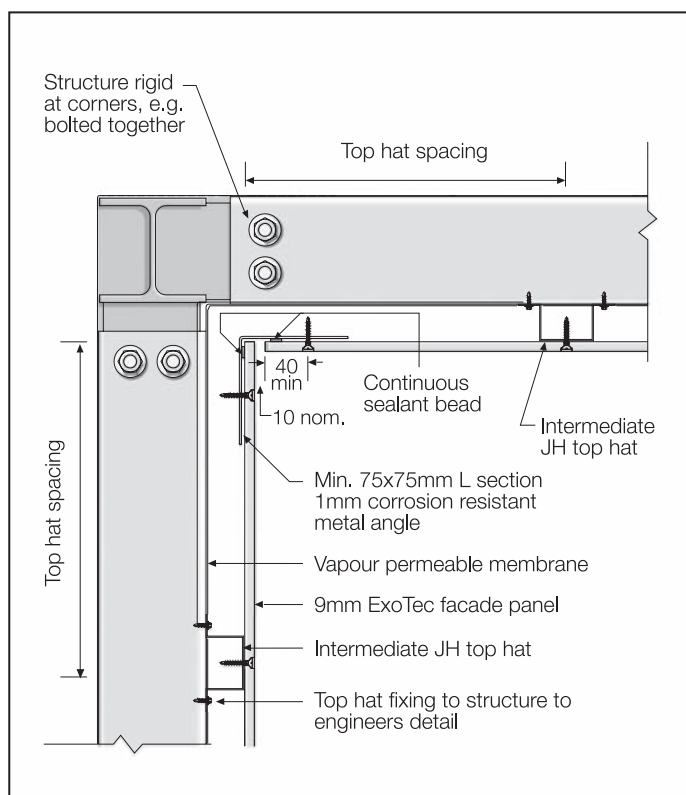


FIGURE 34 INTERNAL CORNER DETAIL

# 12 WINDOWS

The ExoTec facade panel and fixing system provides an opportunity to consider a range of alternative window treatments. The building designer, in conjunction with the window manufacturer, must consider the adequate weatherproofing of the window application.

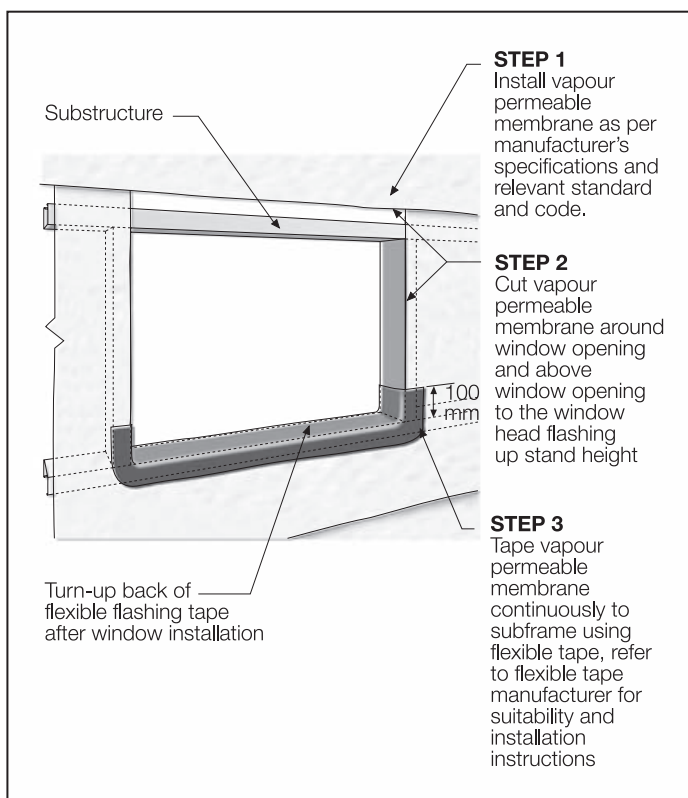


FIGURE 35 INSTALLATION OF VAPOUR PERMEABLE MEMBRANE

Windows may be flush with the facade using figures 35– 45. This is a guide only. All windows are different and sufficient provision for moisture management must be made, see Clause 2.5 of the ExoTec facade panel and fixing system Technical Specification.

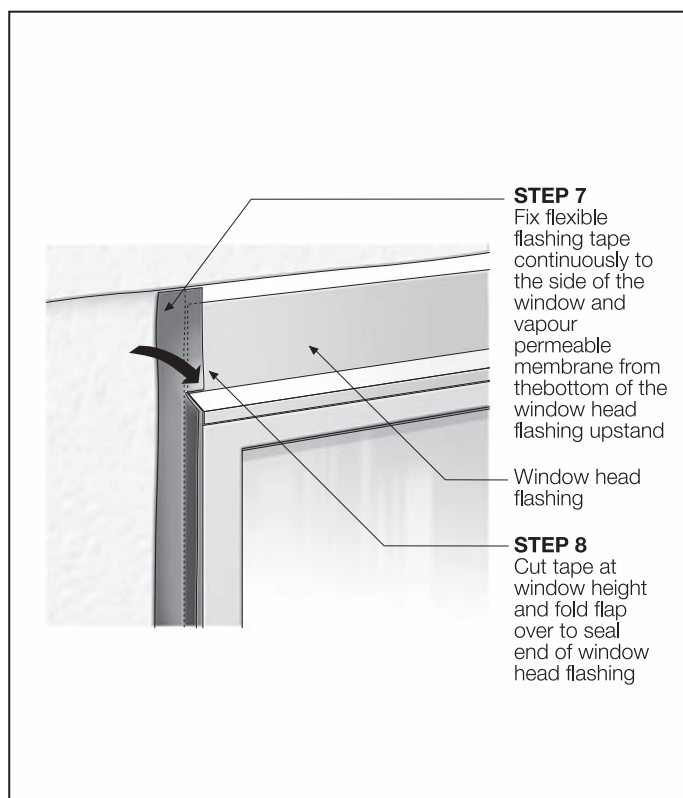


FIGURE 37 HEAD INSTALLATION OF WINDOW

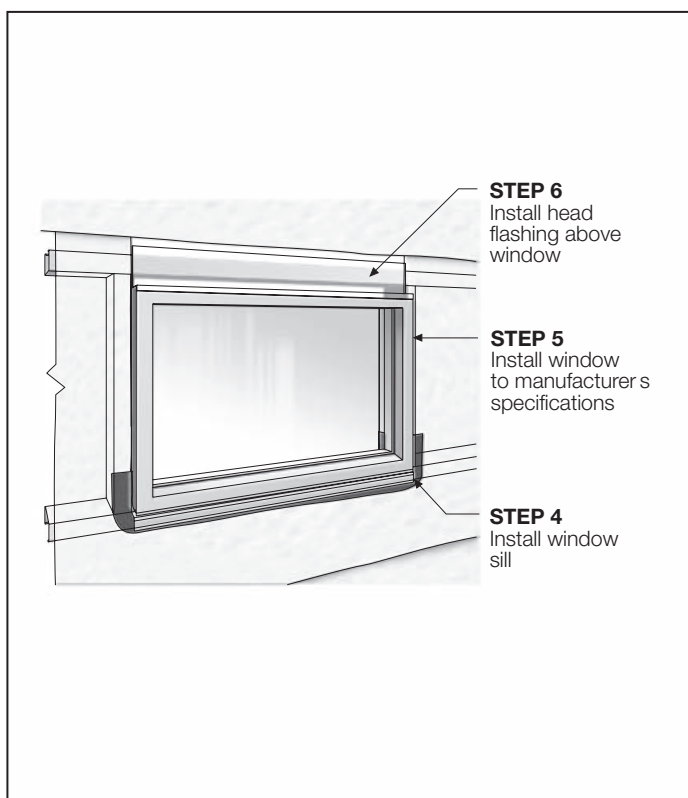


FIGURE 36 INSTALLATION OF WINDOW



FIGURE 38 INSTALLATION OF WINDOW

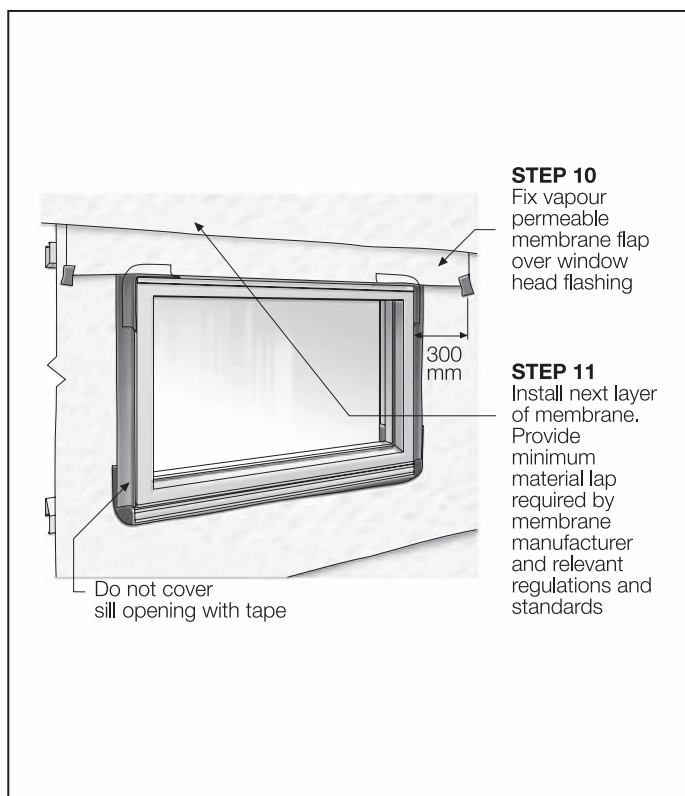


FIGURE 39 PREPARATION AROUND WINDOW

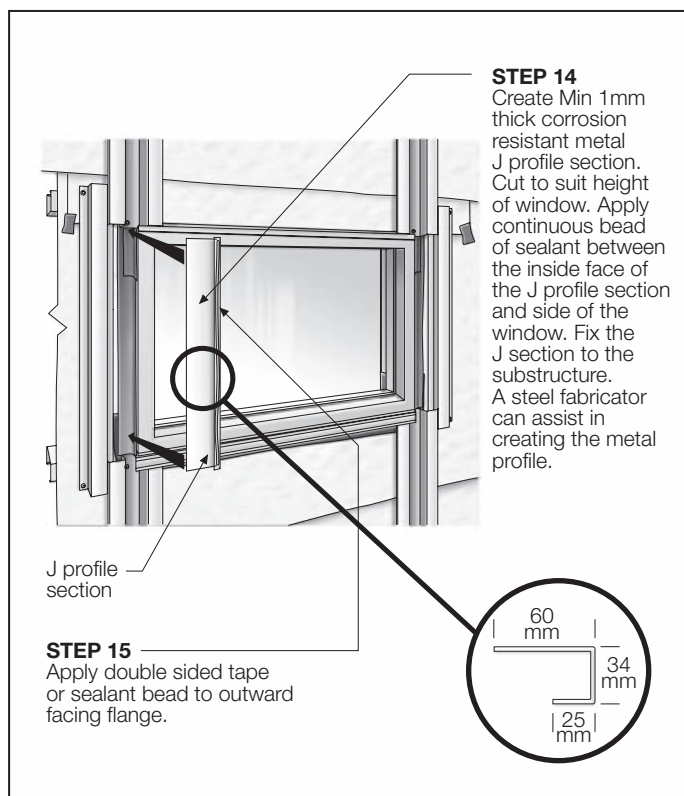


FIGURE 41 INSTALLATION OF J SECTION

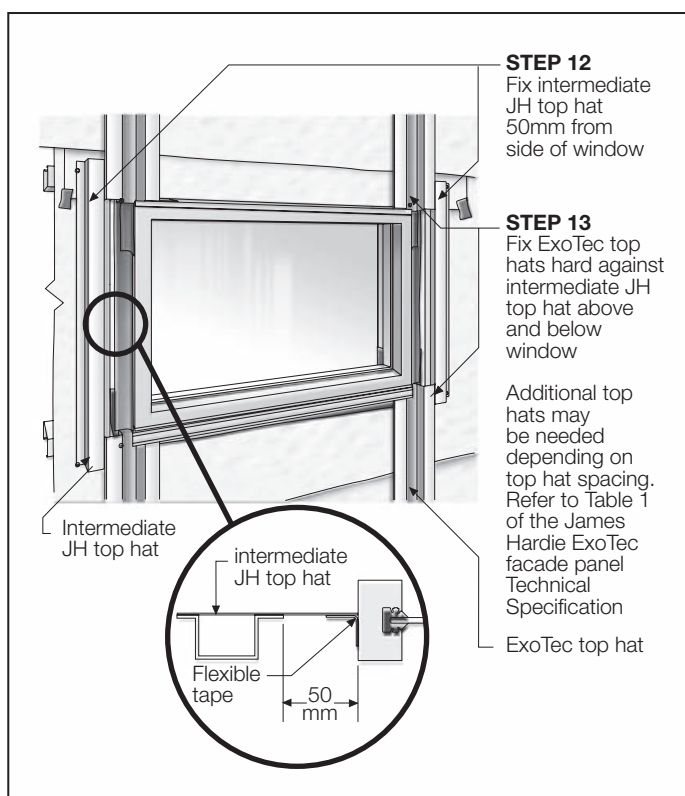


FIGURE 40 INSTALLATION OF TOP HATS AROUND WINDOW

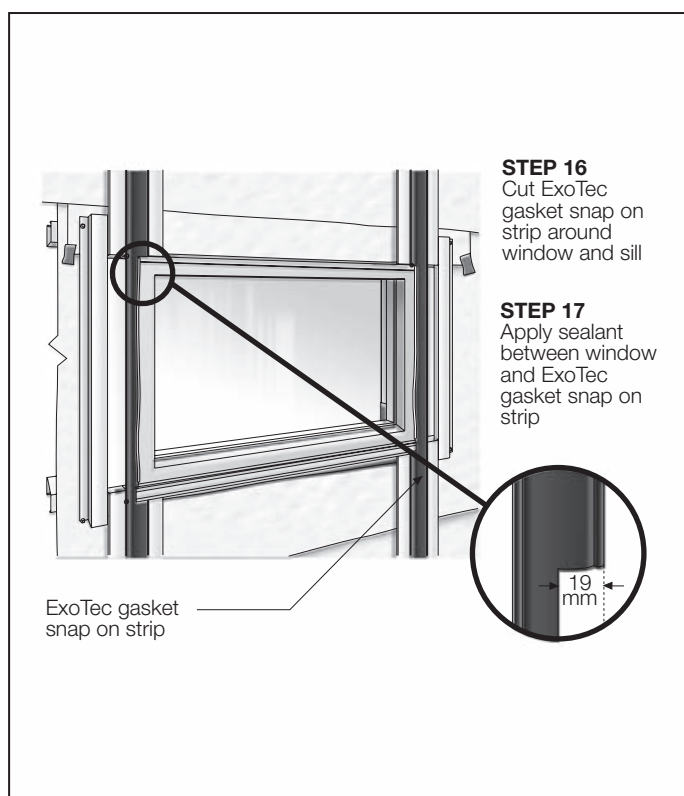


FIGURE 42 INSTALLATION OF SNAP ON STRIP

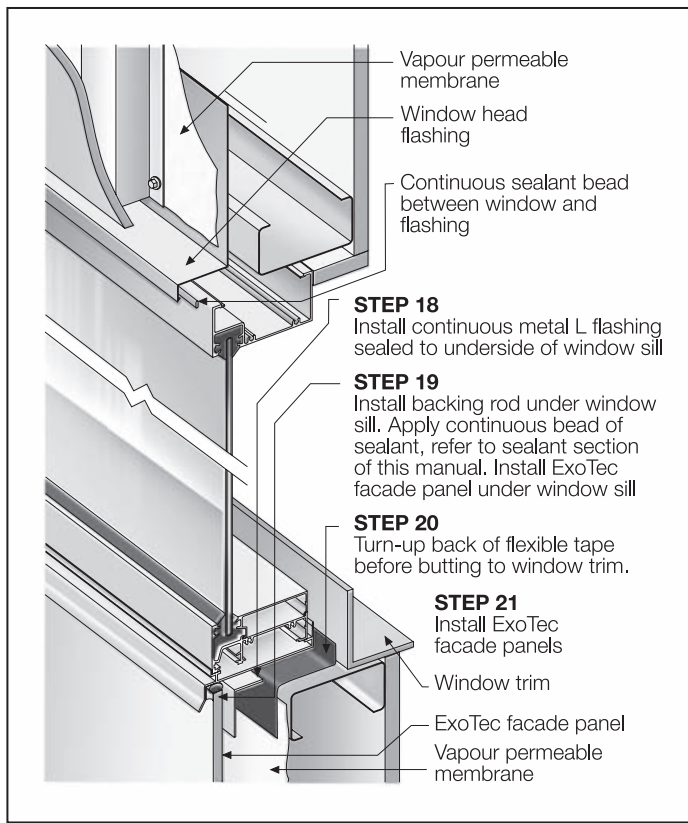


FIGURE 43 OVERVIEW CUTAWAY SECTION OF WINDOW

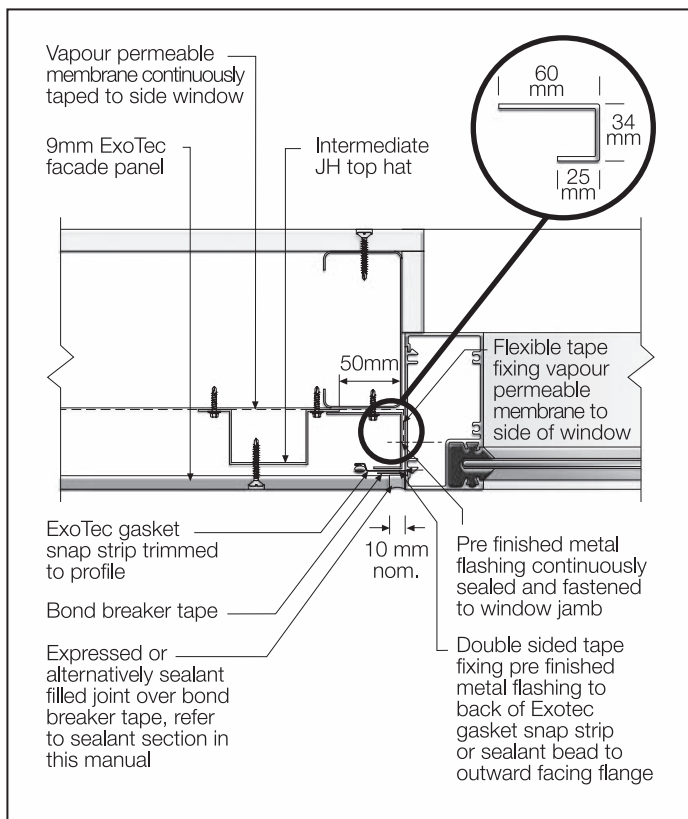


FIGURE 44 WINDOW JAMB DETAIL

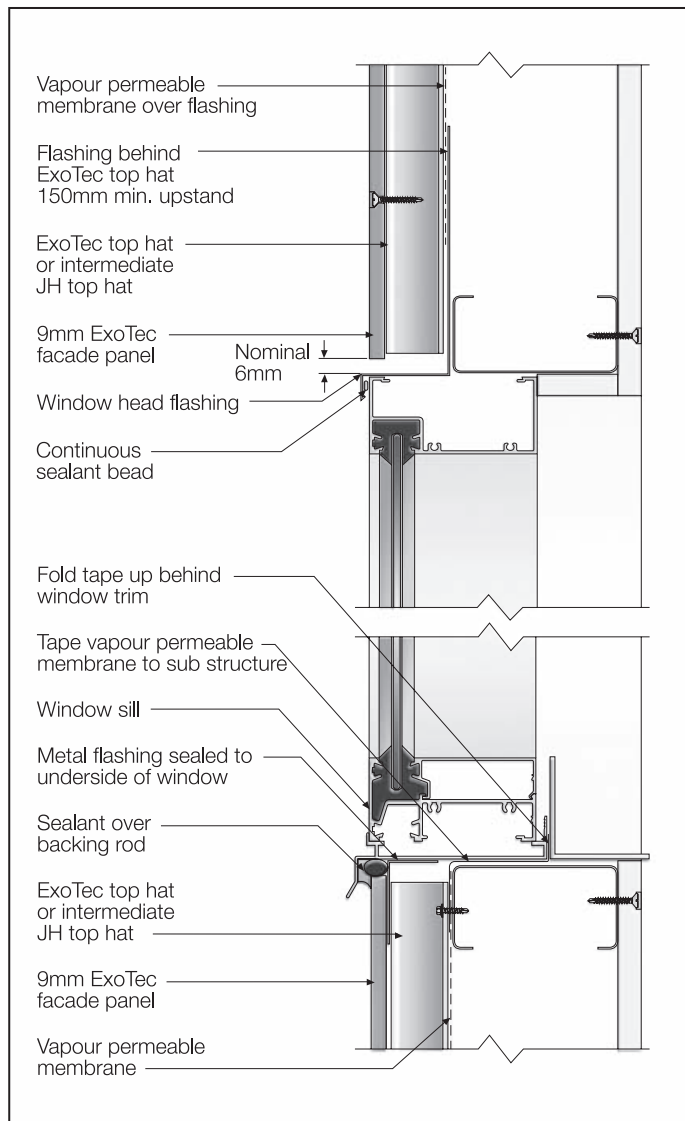


FIGURE 45 CROSS SECTION OF WINDOW

## 13 PARAPET DETAILS

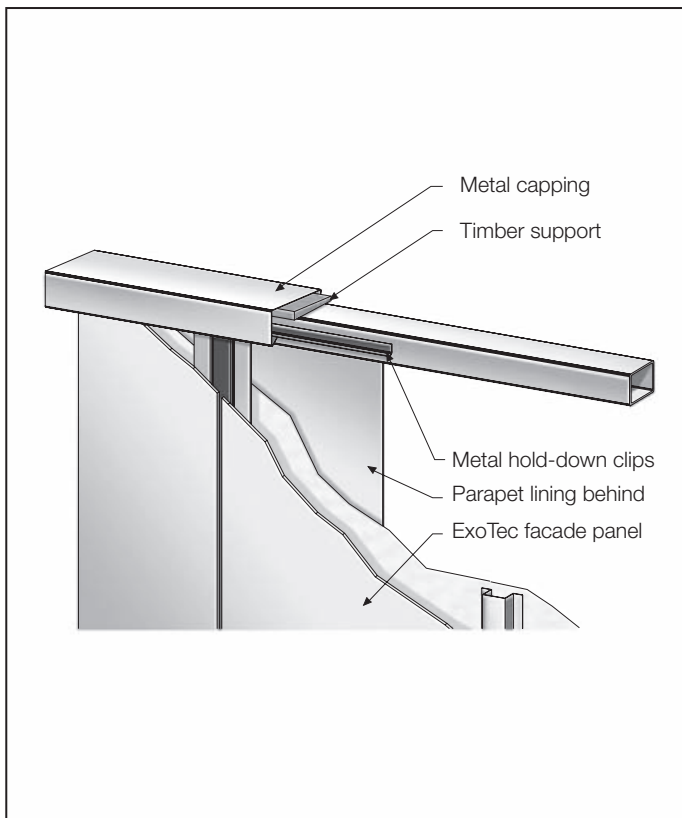


FIGURE 46 PARAPET CAPPING CUTAWAY DETAIL 1

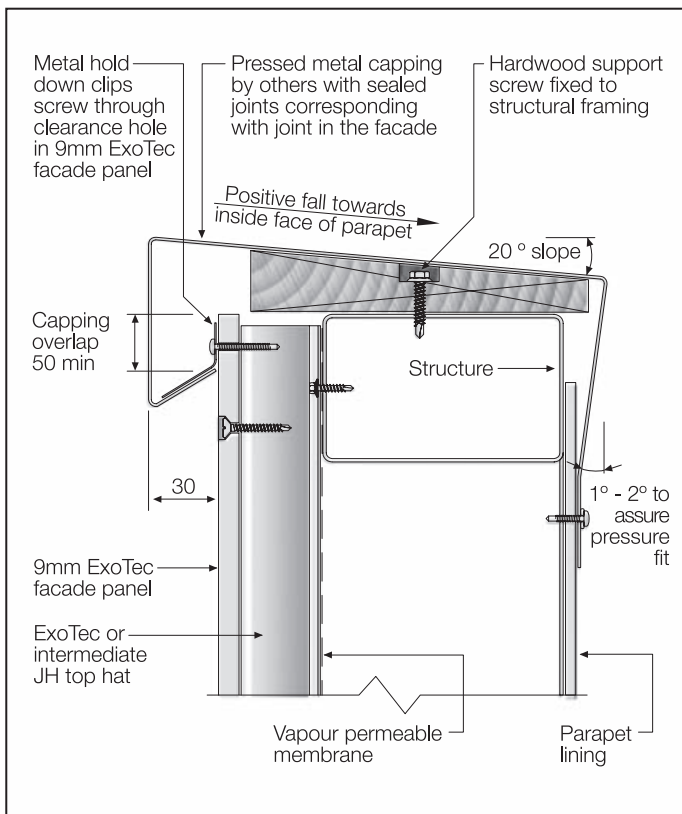


FIGURE 47 PARAPET CAPPING DETAIL 1

## 14 FINISHING

### GENERAL

ExoTec facade panels will readily accept a wide variety of applied finishes, including site-applied textures and factory finishes.

For site-applied finishes (acrylic coatings), follow the paint manufacturer's recommended advice to adequately cover the sanded smooth James Hardie base coat filler applied over the epoxy filled concealed fixings (refer to fixing section).

In order to seal cut edges or sanded patches two coats of an appropriate primer should be applied at the time of cutting or sanding e.g. Dulux AcraPrime 501/1 (water based).

The face and edges of the panels must be coated in accordance with the paint manufacturer's recommendations.

For further information contact the service centre of the relevant paint company, as follows:

- Dulux Trade Customer Service on 13 23 77
- Taubmans Customer Service on 13 16 86
- Wattyl Hotline on 13 21 01

Polyurethane paints are not suitable as a site-applied finish but can be factory coated prior to installation. Pre-finished panels are generally installed using exposed head fasteners

Some environments require special coatings. Painting selection and specifications are dependant on the paint chosen. Refer to the paint manufacturer.

Fixing tiles onto ExoTec facade panels is not recommended.

### PANELS EXPOSED TO DIRECT SUNLIGHT

The face or rear of the panels must not be exposed to direct sunlight for any period greater than three months. The face must be over-coated as recommended by the paint companies mentioned above. However, if the rear clear sealer is exposed to direct sunlight by its application, e.g. fascias, plantrooms, etc., then the clear sealer must be coated with a minimum of two coats of an exterior grade acrylic, pigmented white, with a minimum of 10 years warranty, by one of the paint companies previously mentioned.

**It is the responsibility of the specifier to identify other weather related risks with any particular building design.**

### NOTE

Refer to the previously mentioned paint companies for suitable rear face surface preparation on the ExoTec facade panels.

# 15 MAINTENANCE

It is the responsibility of the specifier to determine normal maintenance requirements.

The extent and nature of maintenance will depend on the geographical location and exposure of the building. As a guide, it is recommended that basic normal maintenance tasks shall include but not be limited to:

- In coastal areas, a six monthly washdown of expressed joints must be done as per Clause 2.4. in the current ExoTec facade panel and fixing system Technical Specification.
- Annual checks and maintenance for the exposed sealant (3mm fillet at horizontal joints, filled vertical and horizontal joints) referenced in Clauses 6.2, 6.3, 6.4, 6.5, 6.6, 7.1, 9, 11.1 and 11.2, must be done as required by the sealant manufacturer, refer to the current ExoTec facade panel and fixing system Technical Specification.
- Maintenance to painted surfaces must be carried in accordance with the paint manufacturer's specification, refer to section 14 in this manual.
- As required, clear debris build up against ExoTec facade panels.
- Maintain sealant as per manufacturer recommendations, to ensure weather seal.
- Clean out gutters, blocked pipes and overflows as required.



# 16 WARRANTY

## ExoTec® facade panel and fixing system

### 10 YEAR WARRANTY

#### January 2012

James Hardie Australia Pty Limited ("James Hardie") warrants to the first purchaser of ExoTec® facade panel (**Product**) from James Hardie and the last purchaser of the Product prior to installation that, subject to compliance with the Conditions of Warranty below:

- for a period of 10 years from the date of purchase, the Product will be free from defects due to defective factory workmanship or materials; and
- for a period of 10 years from the date of purchase, the Product will be resistant to damage from cracking, moisture, rotting, fire and termites to the extent set out in James Hardie's relevant published literature current at the time of installation; and
- for a period of 12 months from the date of purchase that the accessories supplied by James Hardie will be free from defects due to defective factory workmanship or materials.

For the purposes of this warranty, a "defect" in respect of the Product means a non-compliance with AS/NZS 2908.2:2000 Cellulose-cement products - Flat sheet.

#### CONDITIONS OF WARRANTY

This warranty is strictly subject to the following conditions:

- (a) James Hardie will not be liable for breach of this warranty unless the claimant provides proof of purchase of the Product and makes a written claim to James Hardie at the address set out below, either within 30 days after the defect would have become reasonably apparent or, if the defect was reasonably apparent prior to installation, then the claim must be made prior to installation.
- (b) the Product is subject to natural variation in finish as part of the manufacturing process. The builder/installer must ensure the Product meets aesthetic requirements before installation. Subject to the terms of this warranty, after installation of the Product, James Hardie is not liable for claims arising from aesthetic surface variations if such variations were, or would upon reasonable inspection have been, apparent prior to installation;
- (c) this warranty cannot be relied upon by any other person and is not transferable;
- (d) the Product must be installed and maintained strictly in accordance with the relevant James Hardie literature current at the time of installation and must be installed in conjunction with the components or products specified in the literature. To obtain copies of such literature go to or contact Ask James Hardie™ on 13 11 03. Further, all other products, including coating and jointing systems, applied to or used in conjunction with the Product must be applied or installed and maintained strictly in accordance with the relevant manufacturer's instructions and good trade practice;
- (e) the project must be designed and constructed in strict compliance with all relevant provisions of the current Building Code of Australia, regulations and standards;
- (f) if the claimant chooses to rely upon this warranty then the claimant's sole remedy under this warranty for breach of this warranty is (at James Hardie's option) that James Hardie will either supply replacement Product, rectify the affected Product or pay for the cost of the replacement or rectification of the affected Product;
- (g) In the circumstances where the Australian Consumer Law does not apply in respect of the purchase of the Product, James Hardie will not be liable for any losses or damages (whether direct or indirect) including property damage or personal injury, consequential loss, economic loss or loss of profits, arising in contract or negligence or howsoever arising. Without limiting the foregoing, James Hardie will not be liable for any claims, damages or defects arising from or in any way attributable to poor workmanship, poor

design or detailing, settlement or structural movement and/or movement of materials to which the Product is attached, incorrect design of the structure, acts of God including but not limited to earthquakes, cyclones, floods or other severe weather conditions or unusual climatic conditions, efflorescence or performance of paint/coatings applied to the Product, normal wear and tear, growth of mould, mildew, fungi, bacteria, or any organism on any Product surface or Product (whether on the exposed or unexposed surfaces);

- (h) In the circumstances where the Australian Consumer Law does not apply in respect of the purchase of the Product, all warranties, conditions, liabilities and obligations other than those specified in this warranty are excluded to the fullest extent allowed by law;
- (i) If meeting a claim under this warranty involves re-coating of Product, there may be slight colour differences between the original and replacement Product due to the effects of weathering and variations in materials over time and James Hardie is not liable for any such colour differences;
- (j) In the circumstances where the Australian Consumer Law does not apply in respect of the purchase of the Product and therefore to this warranty, all expenses incurred as a result of claiming under this warranty are to be borne by the claimant.
- (k) In the circumstances where the Australian Consumer Law does apply in respect of the purchase of the Product and therefore to this warranty, if James Hardie accepts or it is determined by James Hardie that the claimant has a valid claim under this warranty, James Hardie will bear the claimant's reasonable costs of claiming under this warranty. The claimant is responsible for all other costs of claiming under this warranty. All claims for such costs are to be notified to James Hardie at the address outlined below within 21 days from when the claimant first makes a claim under this warranty.

#### DISCLAIMER

The recommendations in James Hardie's literature are based on good building practice but are not an exhaustive statement of all relevant information and are subject to conditions (d), (e), (g) and (h) above. Further, as the successful performance of the relevant system depends on numerous factors outside the control of James Hardie (e.g. quality of workmanship and design), James Hardie shall not be liable for the recommendations in that literature and the performance of the relevant system, including its suitability for any purpose or ability to satisfy the relevant provisions of the Building Code of Australia, regulations and standards.

#### IMPORTANT NOTE

If you acquire goods manufactured by James Hardie as a consumer according to the Australian Consumer Law, our goods come with guarantees that cannot be excluded under the Australian Consumer Law. You are entitled to a replacement or refund for a major failure and compensation for any other reasonably foreseeable loss or damage. You are also entitled to have the goods repaired or replaced if the goods fail to be of acceptable quality and the failure does not amount to a major failure.

Any rights a consumer may have under this warranty are in addition to other rights and remedies of a consumer under a law in relation to the goods to which this warranty relates. Nothing in this document shall exclude or modify any legal rights a customer may have under the Australian Consumer Law or otherwise which cannot be excluded or modified at law.

Contact details if you wish to make a claim under this warranty: For more information or to make a claim under this warranty please Ask James Hardie™ on 13 11 03, visit [www.jameshardie.com.au](http://www.jameshardie.com.au) or [www.accel.com.au](http://www.accel.com.au), email James Hardie via our website or write to James Hardie at:

**James Hardie Australia Pty Ltd**  
**10 Colquhoun Street Rosehill NSW 2142**  
**PO Box 70 Parramatta NSW 2124**

© Copyright 2012 James Hardie Australia Pty Ltd. ABN 12 084 635 558. ™ and ® denotes a trademark or registered mark owned by James Hardie Technology Limited

Ask James Hardie™  
Call 13 11 03  
[www.jameshardie.com.au](http://www.jameshardie.com.au)